

GE3 Mini Entertainment PC

User Guide



Copyright©2008

All Rights Reserved - Printed in Taiwan

GE3 Mini EPC User Guide

Original Issue: 2008/02

This manual guides you in setting up and using your new mini EPC. Information in this manual has been carefully checked for accuracy and is subject to change without notice.

No part of this manual may be reproduced, stored in a retrieval system, or transmitted, in any form or by any means, electronic, mechanical, photocopy, recording, or otherwise, without prior written permission.

Trademarks

Product names used herein are for identification purposes only and may be the trademarks of their respective companies.

Microsoft, Windows Vista, and Windows Sound System are trademarks of Microsoft Corporation.

Intel ®, Intel ® Core™ 2 Duo, Intel ® Celeron ®, and Intel ® HD Audio (Azalia) are registered trademark of Intel Corporation.

All other brands or product names mentioned in this manual are trademarks or registered trademarks of their respective companies.

FCC Information to User

Safety and Care Instructions

No matter what your level of experience with computers, please make sure you read the safety and care instructions. This information can help protect you and your computer from possible harm.

For Safety Regulation:

- Risk of explosion if battery is replaced by an incorrect type.
- For electrical safety concerns, only use telephone cables rated 26AWG or higher.
- The Optical drive is a Class 1 Laser Product.
- Li-Ion battery is vulnerable, do not charge it with other power adapter, or it may cause fire or explosion.
- For the power supply of this equipment, An approved power cord has to be used. Make sure the socket and any extension cord(s) you use can support the total current load of all the connected devices. Before cleaning the computer, make sure it is disconnected from any external power supplies (i.e. AC adapter).

Radio and television interference

Warning: Use the specified shielded power cord and shielded signal cables with this computer, so as not to interfere with radio and television reception. If you use other cables, it may cause interference with radio and television reception.

This equipment has been tested and found to comply with the limits for a Class B digital device, pursuant to Part 15 of the FCC Rules.

These limits are designed to provide reasonable protection against harmful interference in a residential installation. This equipment generates, uses and can radiate radio frequency energy and, if not installed and used in accordance with the instructions, may cause harmful interference to radio communications. However, there is no guarantee that interference will not occur in a particular installation. If this equipment does not cause harmful interference to radio or television reception, which can be determined by turning the equipment off and on, the user is encourage to try to correct the interference by one or more of the following measures:

- Reorient or relocate the receiving antenna
- Increase the separation between the device and receiver
- Connect the device into an outlet on a circuit different from that to which the receiver is connected.
- Consult the dealer or an experienced radio/television technician for help.

You may find helpful the following booklet, prepared by the Federal Communications Commission: Interference Handbook (stock number 004-000-00345-4). This booklet is available from the U.S. Government Printing Office, Washington, DC20402

Warning: The user must not modify or change this computer without approval. Modification could void authority to this equipment.

FCC RF Exposure

FCC RF Radiation Exposure Statement:

This Transmitter must not be co-located or operating in conjunction with any other antenna or transmitter.

This equipment complies with FCC RF radiation exposure limits set forth for an uncontrolled environment. This equipment should be installed and operated with a minimum distance of 20 centimeters between the radiator and your body.

15.247 (b)(4), the EUT meets the requirement that it be operated in a manner that ensures the public is not exposed to radio frequency energy levels in excess of the Commission's guidelines (1.1307, 1.1310, 2.1091 and 2.1093)

5.105 Federal Communications Commission (FCC) Requirements, Part 15

This equipment has been tested and found to comply with the limits for a class B digital device, pursuant to part 15 of the FCC Rules. These limits are designed to provide reasonable protection against harmful interference in a residential installation.

This equipment generates, uses and can radiate radio frequency energy and, if not installed and used in accordance with the instructions, may cause harmful interference to radio communications. However, there is no guarantee that interference will not occur in a particular installation. If this equipment does cause harmful interference to radio or television reception, which can be determined by turning the equipment off and on, the user is encouraged to try to correct the interference by one or more of the following measures:

- Reorient or relocate the receiving antenna.
- Increase the separation between the equipment and receiver.
- Connect the equipment into an outlet on a circuit different from that to which the receiver is connected.

---Consult the dealer or an experienced radio/TV technician for help.

5.21 Regulatory information/Disclaimers

Installation and use of this Wireless LAN device must be in strict accordance with the instructions included in the user documentation provided with the product. Any changes or modifications (including the antennas) made to this device that are not expressly approved by the manufacturer may void the user's authority to operate the equipment. The manufacturer is not responsible for any radio or television interference caused by unauthorized modification of this device, or the substitution of the connecting cables and equipment other than manufacturer specified. It is the responsibility of the user to correct any interference caused by such unauthorized modification, substitution or attachment. Manufacturer and its authorized resellers or distributors will assume no liability for any damage or violation of government regulations arising from failing to comply with these guidelines.

Canadian Department of Communications Compliance Statement

The Class B digital apparatus meets all requirements of the Canadian Interference Causing Equipment Regulation.
Cet appareil numérique de la class B respecte toutes les exigences du Règlement sur le matériel brouilleur du Canada.

電波障害自主規制について

この装置は、情報処理装置等電波障害自主規制協議会（VCCI）の基準に基づくクラスB情報技術装置です。この装置は、家庭環境で使用することを目的としていますが、この装置がラジオやテレビジョン受信機に近接して使用されると、受信障害を引き起こすことがあります。取扱説明書に従って正しい取り扱いをしてください。

Shielded Cables Notice

All connections to other computing devices must be made using shielded cables to maintain compliance with FCC regulations.

Peripheral Devices Notice

Only peripherals (input/output devices, terminals, printers, etc) certified to comply with Class B limits may be attached to this equipment. Operation with non-certified peripherals is likely to result in interference to radio and TV reception.

Optical Disk Drive Notice

The optical disk drive is Class 1 Laser Product.

Caution

Changes or modifications not expressly approved by the manufacturer may void the user's authority, which is granted by the Federal Communications Commission, to operate this computer.

Use Conditions

This part complies with Part 15 of the FCC Rules. Operation is subject to the following conditions: (1) this device may not cause harmful interference, and (2) this device must accept any interference received, including interference that may cause undesired operation.

European Notice

For the following equipment: Notebook PC



Is herewith confirmed to comply with the requirements set out in the Council Directive on the Approximation of the Laws of the Member States relating to Electromagnetic Compatibility (89/336/EEC), Lowvoltage

Directive (73/23/EEC) and the Amendment Directive (93/68/EEC), the procedures given in European Council Directive 99/5/EC and 89/3360EEC.

The equipment was passed. The test was performed according to the following European standards:

EN 300 328-2 V.1.2.1 (2001-12)

EN 301 489-1 V.1.3.1 (2001-09) / EN 301 489-17 V.1.1.1 (2000-09)

EN 50371: 2002

EN 55022: 2006

EN 55024: 2001

EN 60950: 2000

EN 61000-3-2: 2000

EN 61000-3-3: 1995 + A1: 2001

802.11b and 802.11g Restrictions:

- European standards dictate maximum radiated transmit power of 100mW EIRP and frequency range 2.400-2.4835GHz;
- In France, the equipment must be restricted to the 2.4465-2.4835GHz

frequency range and must be restricted to indoor use."

Warranty requirement in the manual: Along with the user documentation the importer/distributor must provide a statement that warranty services are included in the responsibilities of the distributor representative.

Canada (see also United States)

Canada Radio Frequency Interference Requirements

This Class B digital apparatus complies with Canadian ICES-003, Issue 2, and RSS-210, Issue 4 (Dec. 2000).

"To prevent radio interference to the licensed service, this device is intended to be operated indoors and away from windows to provide maximum shielding. Equipment (or its transmit antenna) that is installed outdoors is subject to licensing."

Cet appareil numérique de la classe B est conforme à la norme NMB-003, No. 2, et CNR-210, No. 4 (Dec. 2000).

« Pour empêcher que cet appareil cause du brouillage au service faisant l'objet d'une licence, il doit être utilisé à l'intérieur et devrait être placé loin des fenêtres afin de fournir un écran de blindage maximal. Si le matériel (ou son antenne d'émission) est installé à l'extérieur, il doit faire l'objet d'une licence. »

Television antenna connectors protection (for system TV tuner card)

External television antenna grounding

If an outside antenna or cable system is to be connected to your mini EPC, make sure that the antenna or cable system is electrically

grounded to provide some protection against voltage surges and static charges.

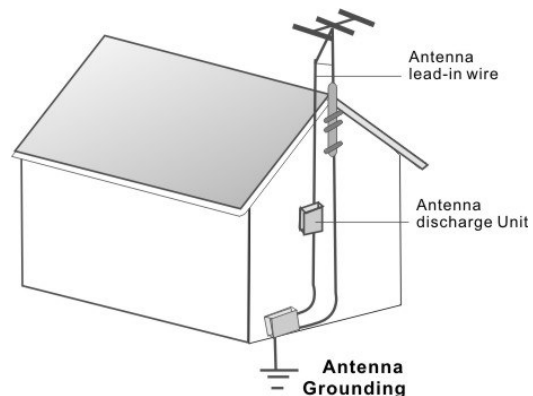
ANSI/NFPA 70, the National Electrical Code (NEC), in particular Section 820.93, provide information with regard to proper grounding of the mask and supporting structure, grounding of the lead-in wire to an antenna discharge unit, size of grounding conductors, location of antenna discharge unit, connection to grounding electrodes, and requirements for the grounding electrode.

Lightning protection

For added protection of any product during a lightning storm or when it is left unattended or unused for long periods of time, unplug the product from the wall outlet and disconnect the antenna or cable system.

Power Lines

Do not locate the antenna near overhead light or power circuits, or where it could fall into such power or circuits.



WARNING: When installing or realigning an outside antenna system, extreme care should be taken to keep from touch such power lines or circuits. Contact with them could be fatal.

For DVD Players with both 525p and 625p progressive scan outputs:

‘CONSUMERS SHOULD NOTE THAT NOT ALL HIGH DEFINITION TELEVISION SETS ARE FULLY COMPATIBLE WITH THIS PRODUCT AND MAY CAUSE ARTIFACTS TO BE DISPLAYED IN THE PICTURE. IN CASE OF 525 OR 625 PROGRESSIVE SCAN PICTURE PROBLEMS, IT IS RECOMMENDED THAT THE USER SWITCH THE CONNECTION TO THE ‘STANDARD DEFINITION’ OUTPUT. IF THERE ARE QUESTIONS REGARDING OUR TV SET COMPATIBILITY WITH THIS MODEL 525p AND 625p DVD PLAYER, PLEASE CONTACT OUR CUSTOMER SERVICE CENTER.’

“This product incorporates copyright protection technology that is protected by U.S. patents and other intellectual property rights. Use of this copyright protection technology must be authorized by Macrovision, and is intended for home and other limited viewing uses only unless otherwise authorized by Macrovision. Reverse engineering or disassembly is prohibited.”

“U.S. Patent Nos. 4,631,603; 4,819,098; 4,907,093; 5,315,448; and 6,516,132.”

Contents

1	INTRODUCTION	15
1.1	FEATURE HIGHLIGHT	15
1.2	UNPACKING THE MINI EPC.....	17
1.3	THE FRONT SIDE OF THE MINI EPC	18
1.4	THE REAR SIDE OF THE MINI EPC	19
1.5	MEMORY UPGRADE	21
2	GETTING STARTED	23
2.1	CONNECTING THE AC POWER SOURCE	23
2.2	CONNECT YOUR MINI EPC TO A TV	24
	<i>Attach the Antenna to your mini EPC.....</i>	<i>25</i>
	<i>Connect a TV with the S-Video connection</i>	<i>26</i>
2.3	CONNECT MINI EPC TO A PC MONITOR	28
2.4	INSTALLING THE MINI EPC DEVICE DRIVERS	29
	<i>driver installation note:.....</i>	<i>29</i>
3	USING YOUR MINI EPC	31
3.1	USING MEDIA CENTER REMOTE CONTROL	31
3.2	USING WIRELESS USB KEYBOARD (OPTION)	34
3.3	CONFIGURING YOUR SCREEN DISPLAY	36
3.4	HOW TO ACCESS THE OPTICAL DRIVE	36
3.5	USING FLASH MEMORY CARDS.....	38
4	FUN WITH WINDOWS VISTA EXPERIENCE	41
4.1	WHAT IS WINDOWS VISTA?	41
4.2	GET READY FOR WINDOWS VISTA	42
4.3	ENJOY YOUR MULTIMEDIA APPLICATION	44
	<i>Internet Explorer.....</i>	<i>44</i>
	<i>Windows Calendar.....</i>	<i>45</i>

<i>Windows Contacts</i>	46
<i>Windows Defender</i>	47
<i>Windows DVD Maker</i>	48
<i>Windows Fax and Scan</i>	49
<i>Windows Live Messenger Download</i>	50
<i>Windows Mail</i>	51
<i>Windows Media Center</i>	52
<i>Windows Media Player</i>	53
<i>Windows Meeting Space</i>	53
<i>Windows Movie Maker</i>	54
<i>Windows Photo Gallery</i>	55
<i>Windows Update</i>	56
<i>Windows Sidebar and Gadgets</i>	57
<i>Gaming</i>	58
<i>Windows Flip and Windows Flip 3D</i>	59
5 CONNECTING TO PERIPHERALS	61
5.1 USING THE USB PORT	61
5.2 USING THE LAN PORT.....	62
5.3 USING THE IEEE 1394 PORT	62
5.4 USING THE AV-IN PORT (OPTIONAL)	63
5.5 USING THE WIRELESS LAN	65
5.6 USING THE MODEM PORT.....	66
6 BIOS SETUP	67
6.1 RUNNING THE BIOS SETUP PROGRAM	67
6.2 USING THE MAIN MENU SETUP	68
6.3 USING THE ADVANCED CMOS SETUP	70
6.4 SECURITY MENU SETUP	71
6.5 USING THE BOOT SETUP	73
6.6 HOW TO EXIT THE SETUP PROGRAM	74

7	CARING FOR YOUR MINI EPC.....	75
	IMPORTANT SAFETY INSTRUCTIONS.....	75
	ENVIRONMENT	75
	POWER SUPPLY	76
	CLEANING YOUR MINI EPC	77
	MAINTAINING HARD DISK	77
APPENDIX A	SYSTEM SPECIFICATIONS.....	79
	SYSTEM SPECIFICATIONS.....	80

1 Introduction

With Windows Vista, you can enjoy a growing universe of digital media content and explore endless entertainment options from the comfort of your couch.

With mini EPC, every member of your family can enjoy the immersive experience of PC games and movies on a big screen. Users can interact with an entertainment PC with an USB mouse and keyboard, or with an optional remote control, which provides an exciting viewing experience from the comfort of the living room sofa.

1.1 Feature Highlight

Before we go to identify each part of your mini EPC, we will first introduce you to other notable features of your mini EPC.

Windows Vista delivers the multitasking power of a dual-core processor and enables sleek new designs to fit your lifestyle, besides it extends the experience you have ever had. With a full range of powerful, yet easy-to-use digital entertainment features, you can experience TV, DVD movies, music and photos like never before.

Processing Unit

- Your mini EPC runs on Intel® Core™ 2 Duo (Santa Rosa) or Celeron® microprocessor that is integrated with 4MB or 2MB L2 Cache. Check with your dealer on the CPU type and speed.
- Fully compatible with an entire library of PC software based on operating systems such as Windows Vista.

Windows Vista Operating System

Windows Vista extends the experience you have. With a full range of powerful, yet easy-to-use digital entertainment features, you can experience TV, DVD movies, music and photos like never before.

Wireless LAN

Intel® PRO/Wireless 3945ABG Network Connection
(IEEE 802.11 b/g, USB2.0 Mini Card)

Memory

This mini EPC provides two memory slots for installing DDR2 SDRAM 200-pin SODIMM modules up to 4GB using 512MB, 1024MB, or 2048MB DDR2 SDRAM modules.

USB 2.0

Provides four USB ports (one at front side and three at rear side) for fastest I/O data transmission.

Graphic System

Provides blazing graphics controller embedded in Intel® GM 965 chipset

Audio System

Azalia ALC268 sound codec chip; compliant with Intel HD Audio.

Bluetooth 2.0 (Class 2)

Bluetooth 2.0 is backward compatible with 1.x, and its EDR (Enhanced Data Rate) is 2.1 Mbit/s. It offers a wireless connection radius of 32.8 feet (10 meters) to other Bluetooth devices.

1.2 Unpacking the mini EPC

Your mini EPC comes securely packaged in a sturdy cardboard shipping carton. Upon receiving your mini EPC, open the carton and carefully remove the contents. The shipping carton contains the following items:



Mini EPC



Antenna



AC Adapter and Power Cord



Remote Control
(optional)



DVI-VGA Adapter
(optional)



Wireless USB Keyboard
(optional)



User Manual or Manual/Drivers CD (optional)

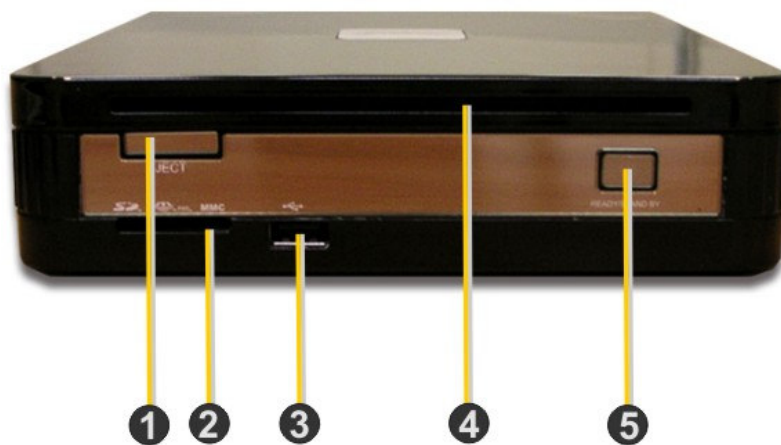


AV-IN Cable (optional)

Carefully inspect each component to make sure that nothing is missing and/or damaged. If any of these items is missing or

damaged, notify your dealer immediately. Be sure to save the shipping materials and the carton in case you need to ship the mini EPC or if you plan to store the mini EPC away sometime in the future.

1.3 The Front Side of the mini EPC



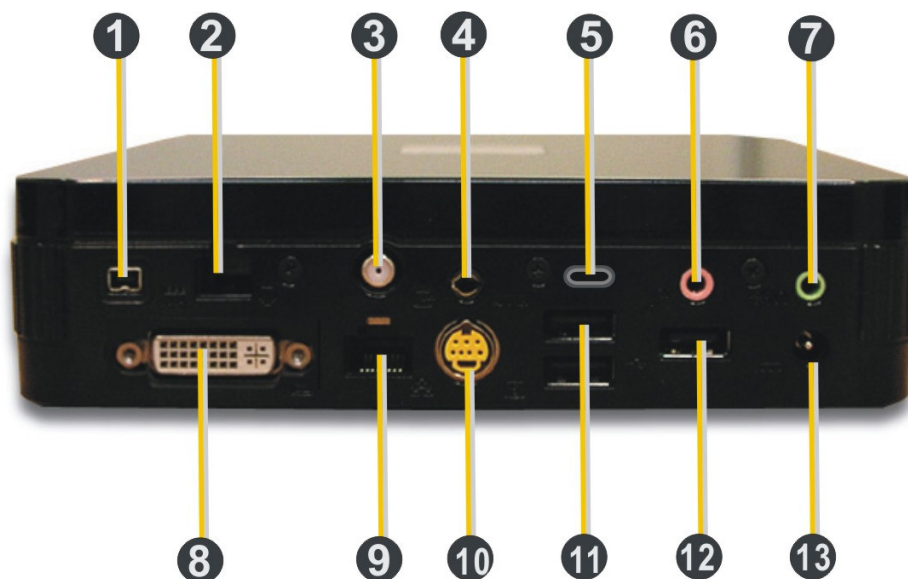
1. Eject Button	2. 4-in-1 Card Reader
3. USB Port	4. Optical Disk Drive
5. Power On/Resume Button	

Feature	Description
1. Eject Button	Press this button to eject optical disk.
2. 4-in-1 Card Reader	The card slot supports SD, MMC, MS (Memory Stick) and MS_Pro flash memory card format. You can use any of the 4 types flash memory cards for extra storage media.
3. USB Port	The Universal Serial Bus (USB) port allows

Feature	Description
	you to connect up to USB-equipped peripheral devices (for example, USB mouse, digital camera, USB storage device and so on).
4. Optical Disk Drive	This optical disk drive is Slot-in type ODD. It allows you to load and start programs from a CD/DVD and play DVD movies and audio CDs. It also can burn CD/DVD.
5. Power On /Resume Button	Switches the mini EPC power on or off, or resumes whenever it is in Suspend mode.

1.4 The Rear Side of the Mini EPC


The system ports at the back of your mini EPC can connect various devices. Each port is described as followings.



1. IEEE 1394	2. Modem Port
3. TV_IN	4. AV_In Port
5. Kensington Lock	6. Microphone Jack
7. Headphone Jack	8. DVI-I Socket
9. LAN Port	10. TV Port (S-video)
11 USB Ports	12. USB Port
13. DC_In	

Feature	Description
1. IEEE 1394	IEEE 1394 port is a high speed I/O port that can transfer high levels of data in real-time, such as Digital Video Camera, external hard disk.
2. Modem Port	A 56K internal fax/data modem is built-in. It keeps you connected to the outside networks through telephone line.
3. TV_IN	Connects to an antenna to receive television signal for watching and recording TV programs.
4. AV_In Port	This port is for Audio and Video input.
5. Kensington Lock	Lets you attach a Kensington security system or a compatible lock to physically secure your mini EPC.
6. Microphone Jack	Allows you to connect an external microphone.
7 Headphone Jack	Lets you plug in high-definition headphone, powered speakers, or earphone. (The SPDIF transmits digitized audio signal by optical fiber. The external audio amplifier can get the best

Feature	Description
	audio quality without loss.)
8. DVI-I Socket	This socket can accept both analog signal (VGA) and digital signal (DVI) inputs. The “DVI-I” is the abbreviation of “Digital Video Interactive-Integrated”.
9. LAN Port	An internal 10/100/1000Base-T Gigabit Ethernet LAN module connects your mini EPC to other mini EPCs/networks through a local area network (LAN).
10. TV Port (S-video)	Lets you connect to the S-Video TV connector for watching TV programs or DVD movie.
11. 12. USB Ports	The Universal Serial Bus (USB) port allows you to connect up to USB-equipped peripheral devices (for example, USB mouse, digital camera, USB storage device and so on).
13. DC_In	Lets you connect the AC power adapter in supplying continuous power to your mini EPC.

 ***The audio function is available after inserting the speaker or headphone into audio port..***

1.5 Memory Upgrade

Your mini EPC offers 200-pin SODIMM (Small Outline Dual Inline Memory Module) at least 256MB DDR2-SDRAM. The memory compartment is located inside your mini EPC. The table below lists

the possible combinations of different memory module and memory size.

 ***Please contact dealer for changing or adding DDR2-SDRAM module. It is not available for users to change it by themselves.***

Based Memory	Installing Memory	Total
512 MB	0 MB	512 MB
512 MB	512 MB	1024 MB
512 MB	1024 MB	1536 MB
512 MB	2048 MB	2560 MB
1024 MB	0 MB	1024 MB
1024 MB	512 MB	1536 MB
1024 MB	1024 MB	2048 MB
1024 MB	2048 MB	3072 MB
2048 MB	0 MB	2048 MB
2048 MB	512 MB	2560 MB
2048 MB	1024 MB	3072 MB
2048 MB	2048 MB	4096 MB

2 Getting Started

Your mini EPC is designed and pre-configured for easy setup and use. This chapter describes the installation steps you should follow to get the mini EPC up and running as quickly as possible. Contact your dealer if they have pre-installed all the needed drivers to fully operate your mini EPC or if there is the updation on the driver installation of the mini EPC.

2.1 Connecting the AC Power Source

The AC adapter provides external power source to your mini EPC and the AC adapter also has an auto-switching design that can connect to any 100VAC ~ 240VAC power outlets.

To connect the power adapter:

1. Plug the AC power cord into the power socket of the AC power adapter. And plug the other end of the AC power cord to a live AC wall outlet.



2. Plug the connector of the AC adapter to the DC-IN port found at the rear side of the mini EPC.

- ⚠**
- ***For the power supply of this equipment, an approved power cord has to be used.***
 - ***Make sure the socket and any extension cord(s) you use can support the total current load of all the connected devices.***
 - ***Before cleaning the mini EPC, make sure it is disconnected from any external power supplies (i.e. AC adapter).***

2.2 Connect your mini EPC to a TV

Connect your mini EPC (running Microsoft Windows Vista) to your TV, and you can enjoy your favorite mini EPC and TV entertainment from the same spot in your living room. You can enjoy live and recorded TV, DVDs, music, photos, and Online Spotlight's offerings on the big

screen from the comfort of your couch — and you can control it all with a single remote control.

Attach the Antenna to your mini EPC

This Mini EPC has built-in a TV tuner card to process analog television signals. (Beside, this TV tuners card functions as video capture cards to record television programs onto a hard disk.)

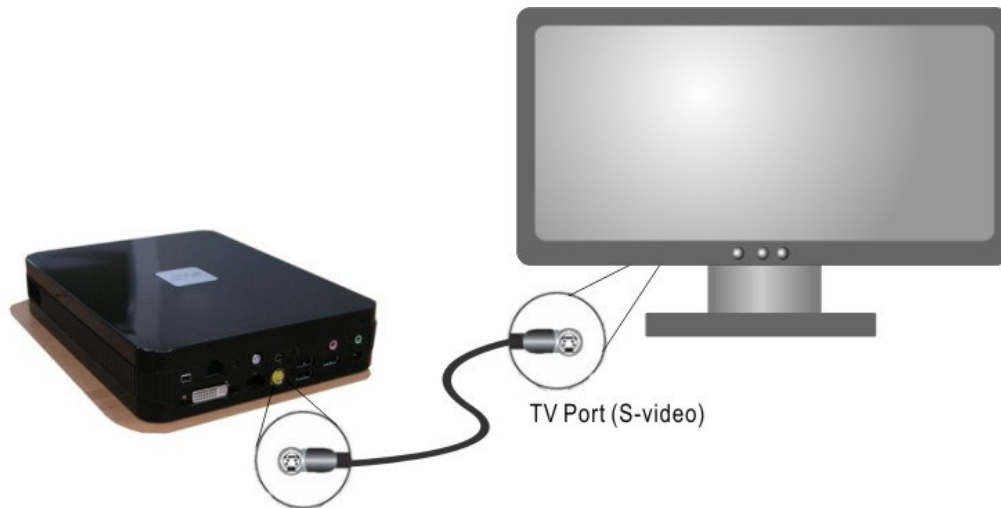
TV tuners supporting digital television broadcasts have recently become available; a tuner displaying an HDTV image on a mini EPC monitor is typically much cheaper than a dedicated high-definition television system. The TV tuner card also supports time-shifting capabilities, allowing the viewer to rewind, fast-forward and pauses live TV.

The Mini EPC also comes with an Antenna. To receive television signal well, you need to attach the antenna to your mini EPC.



Connect a TV with the S-Video connection

1. Connect the S-Video cable to your TV Port, located on the back of your Media Center PC.



2. Connect the other end of the S-Video cable to the S-Video input connection on the back of your TV.

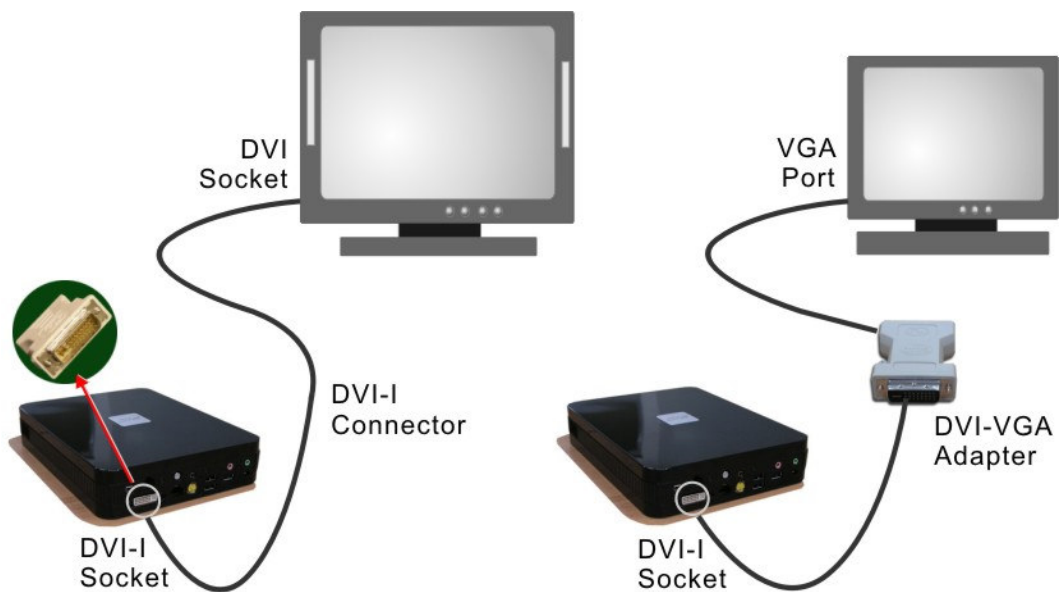


Enjoy your digital Lifestyle

2.3 Connect mini EPC to a PC Monitor

You can connect a monitor to your PC mini EPC with running Microsoft Windows Vista. All you have to do is plug the cable from the monitor into the back of the high-level mini EPC with a DVI-I Socket.

Most monitors use a VGA cable to connect to a PC. In this case, you can connect the VGA cable from the monitor to the DVI-I Socket on the back of your Media Center PC via a DVI-VGA Adapter. Or you can connect directly to the monitor with DVI socket.



2.4 Installing the Mini EPC Device Drivers

It is best to install the needed device drivers for using the built-in devices of your mini EPC. Before installing the drivers, check with your dealer first if they have already installed all the drivers along with the operating system. If not, follow the procedures below:

DRIVER INSTALLATION NOTE:

NOTE: Please be notified that whenever you install the driver utility, it should be install the CHIPSET Driver first.

Installing Drivers for Windows Vista x86

1. From the Windows toolbar, click the **Start** button, then point to **Run**. The **Run** dialog box appears.
2. Click the **Browse** button and specify the directory as where the device driver is located.
3. Read the on-screen information, and follow the on-screen instructions to complete drivers installation.

Device Driver	Driver Path
<i>Chipset device</i>	
	"E:\Drivers\Vista32\Chipset\Setup.exe"
<i>VGA device</i>	
	"E:\Drivers\Vista32\VGA\Setup.exe"
<i>Audio device</i>	

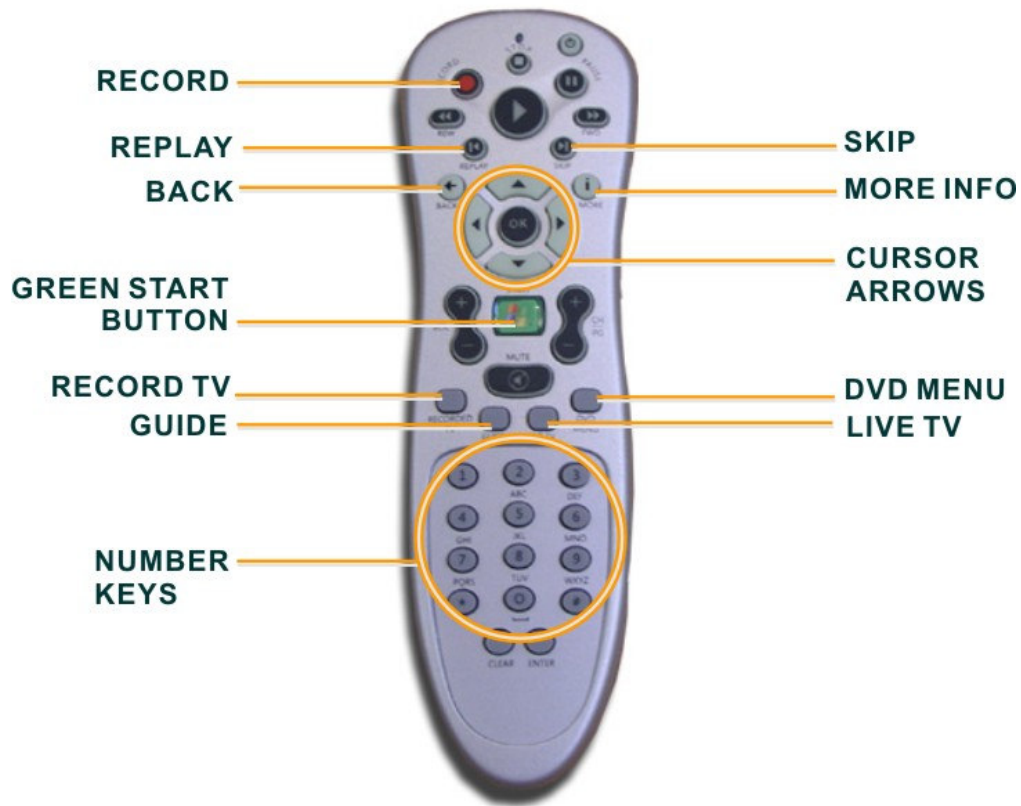
	"E:\Drivers\Vista32\Audio\Setup.exe"
Modem driver	
	"E:\Drivers\Vista32\Modem\Setup.exe"
Wireless LAN driver and Utility	
	"E:\Drivers\Vista32\Wireless LAN\Intel 3945ABG\autorun.exe"
	"E:\Drivers\Vista32\Wireless LAN\Azurewave GU701\Setup.exe"
LAN driver	
	"E:\Drivers\Vista32\LAN\SetupYukonWinC_5X6N.exe"
CIR driver	
	"E:\Drivers\Vista32\CIR\DPInst.exe"
TV Tuner driver	
	"E:\Drivers\Vista32\TV Tuner\A316_Vistalogo_DRV_x86_V1.3.0.30.exe"
Bluetooth Driver and Utility	
	"E:\Drivers\Vista32\Bluetooth\setup.exe"

3 Using Your Mini EPC



This chapter describes how to operate the standard features of the mini EPC. With mini EPC, every member of your family can enjoy the immersive experience of PC games and movies on a big screen. Users can interact with an entertainment PC with a USB mouse and keyboard, or with an optional remote control, which provides an exciting viewing experience from the comfort of the living room sofa.




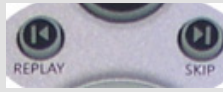



3.1 Using Media Center Remote Control



The mini EPC comes with a Media Center remote control, and this Media Center remote control bring your Media Center experience to a whole new level.



Media Center Remote Control

Button	Description
	<p>Press the RECORD button on the remote to begin recording what you're currently watching. To find and watch it later, simply press the RECORD TV button.</p>
	<p>The MORE INFO button brings up additional option related to where you are in the menu system. You can also press MORE INFO to get details on the music, TV, pictures, or video that is selected.</p>

Button	Description
	<p>When navigating through the Media Center menu system, press the BACK button to go to the previous screen.</p>
	<p>Use the CURSOR ARROWS to navigate up, down, left, or right through the Media menu system. When you find what you want, press OK button in the center of the arrows to select it.</p>
	<p>The GREEN START BUTTON will launch the Media Center menu system when you are in Windows Vista. If you are navigating around the Media Center, press GREEN START BUTTON will bring you back to the Media Center Starting menu options.</p>
	<p>Press SKIP on the remote to jump forward in 30 seconds time increments in the recorded TV show you're watching. If you want to see that great sports play again when watching live TV or recorded TV, press REPLAY on the remote and watch it again.</p>
	<p>Press RECORDED TV to go directly to the Recorded TV menu and see what recorded TV programs you have saved on the mini EPC.</p>
	<p>Press the GUIDE button to go directly to the TV program listings and find a show to watch now or to select a show or series to record in the future.</p>
	<p>Press the LIVE TV button to bring up TV on the screen of the television connected to your mini EPC.</p>

Button	Description
 A square button with a dark blue background and a lighter blue circle in the center. Below the circle, the words "DVD MENU" are printed in white capital letters.	Press the DVD MENU button to access the main menu of the DVD in your DVD drive and to begin watching it.
 A close-up of the number keys on a remote control. The keys are arranged in a 3x4 grid. The top row has keys 1, 2, and 3. The second row has keys 4, 5, and 6. The third row has keys 7, 8, and 9. Below these are keys for letters: 0 (with P, Q, R, S), 1 (with A, B, C), and 2 (with D, E, F). The bottom row has keys for letters: 3 (with G, H, I), 4 (with J, K, L), and 5 (with M, N, O). The bottom-most row has keys for letters: 6 (with P, Q, R, S), 7 (with T, U, V), and 8 (with W, X, Y, Z).	Use the NUMBER KEYS to go directly to the TV channel you want to watch or use them to type letters, numbers, or symbols into a search box.

3.2 Using Wireless USB Keyboard (option)

Before using the wireless USB keyboard, you must activate communication between the mini EPC and the wireless USB Keyboard.

Please follow the steps to install the wireless USB keyboard.

1. Turn the keyboard upside down to open the battery compartment which is located on the bottom of the keyboard.
2. Insert supplied batteries and replace battery compartment cover.
3. Connect **USB Receiver** to the USB port at the mini EPC.
4. Press the button on the **USB Receiver**, then press "**ID Link**" button on the keyboard within 10 seconds to communicate signals.



Key numbers: 99Keys (including hot-keys)
with **Track Ball** (mouse) function

Battery: AA size Battery x4

Parameters for Remote Control

Distance for remote control: within 5m.

Angle for remote control: 360 degrees

Frequency for signal transmitted: at 2.4GHz frequency.

Standby Mode: System will wait for 5 minutes to activate Standby Mode if there is no any input signal. You can touch any key to resume system. During Standby Mode, mouse (pointing device) will be disabled while keyboard function reminds alive.

3.3 Configuring Your Screen Display

Possible Display Configurations

The table below shows you the possible display resolution you can set when using either the LCD display or the external monitor (CRT):

Display	Maximum Resolution	Maximum Colors
External Monitor	1600x1200, 85Hz	32-bit true colors

 *65,536 or 64K colors is also equivalent to 16-bit high color while 16 million or 16M colors is equivalent to 32-bit true color.*

3.4 How to Access the Optical Drive

Your mini EPC is equipped with a Slot-in type DVD multi/Combo drive on the front panel of the mini system. You can play music from audio

CDs or play DVD movies. You can also burn music CDs, and save documents and other digital files on CD-R/DVD-R or CD-RW/DVD-RW discs.

To insert and remove an optical disk on the drive:

1. Make sure the mini EPC is turned on.
2. Slide the optical disk into the slot-in type optical drive with the label side facing up.

 ***Some DVD are two-sided and don't have a label on the either side.***



3. To remove the optical disc. Be sure close CD/DVD player related programs.
4. Press the eject button under the optical drive slot. Then the optical disc will slide out.



How to care the CD/DVD

When you handle CDs, pay attention to the following guidelines:


- Always pick up the CD by its edges.
- Avoid scratching or soiling either side of the CD.
- Do not write with the hard ball-point pen or apply labels on either side of the CD.
- Keep the CD away from direct sunlight or high temperatures.
- Clean fingerprints or dust from the CD by wiping it with a soft cloth.

3.5 Using Flash Memory Cards

What is Flash Memory Card?

Flash Memory is a memory storage media. They are used by most digital camera, mobile phone, and PDA. Flash memory cards are built with different form factor and brand name. Their sizes are smaller than PCMCIA card. The 4 in 1 card slot of this mini EPC supports the

flash memory card as SD, MMC, MS (Memory Stick), and MS_Pro cards.

 **For a single moment, only one card can be inserted into the 4 in 1 card slot.**

To insert and remove a Flash Memory Card:

For MMC and SD card, you should position the copper connector at the bottom side. For Memory Stick card, you should position the copper connector at the topside. All of these cards should be located at the center of the slot in inserting.

Slot	Card type	Copper connector
4 in 1	SD (Secure Digital) MMC (MultiMedia Card) MS (Memory Stick) MS_Pro	Bottom side Bottom side Top side Top side

Only one correct side can be accepted for the 4 in 1 card slot. If you cannot insert the card into the 4 in 1 slot or you had inserted the card but it is not recognized by the mini EPC, please remove the card and turn the card upside down and insert it again. To prevent the damage made both on card and the slot, never force an entry into the slot with incorrect side.



To remove the flash memory card, you should first disable the card setting at the taskbar of the windows Vista. Then, you only pull out the card by fingers; there is no release button for flash memory slot.

4 Fun with Windows Vista Experience

The Mini EPC (Mini Entertainment PC) integrated in a highly compact platform is designed for digital entertainment. With Windows Vista, it offers a breakthrough user experience and is designed to help you feel confident in your ability to view, find, and organize information and to control your computing experience. It simplifies our digital life in taking charge of media, share movies, TV, photos, and music with your friends and family.

4.1 What is Windows Vista?

Windows Vista is an operating system that enables you to enjoy the best in entertainment on your notebook.

The visual sophistication of Windows Vista helps streamline your computing experience by refining common window elements so you can better focus on the content on the screen rather than on how to access it.

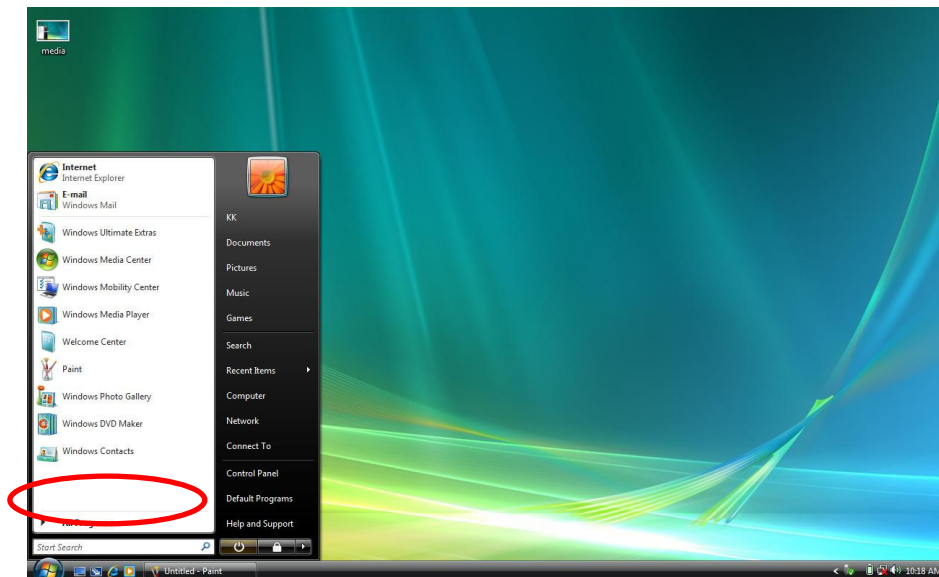
With Windows Vista, you can store, share and enjoy all of your photos, all of your music, all of your home video and even recorded TV. It's all contained in one control system. That is as easy to use with a great new user-friendly interface.

4.2 Get Ready for Windows Vista

Windows Vista is designed to help make you more productive as you work with your PC throughout the day with new features.

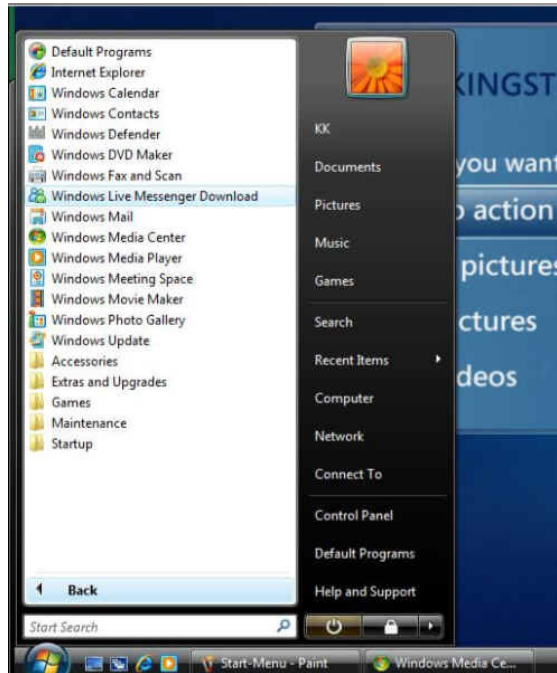
Starting the Windows Vista

When you start using Windows Vista, you will recognize familiar elements such as the Start menu, which is now faster, more streamlined, and more helpful than in previous versions of Windows. More than that, the new start menu makes it very easy for you to navigate across all of the installed applications on your PC. Eliminating the slow performing, cascading "All Programs" view, the new start menu can help you get something started more quickly than ever.



About the entertainment

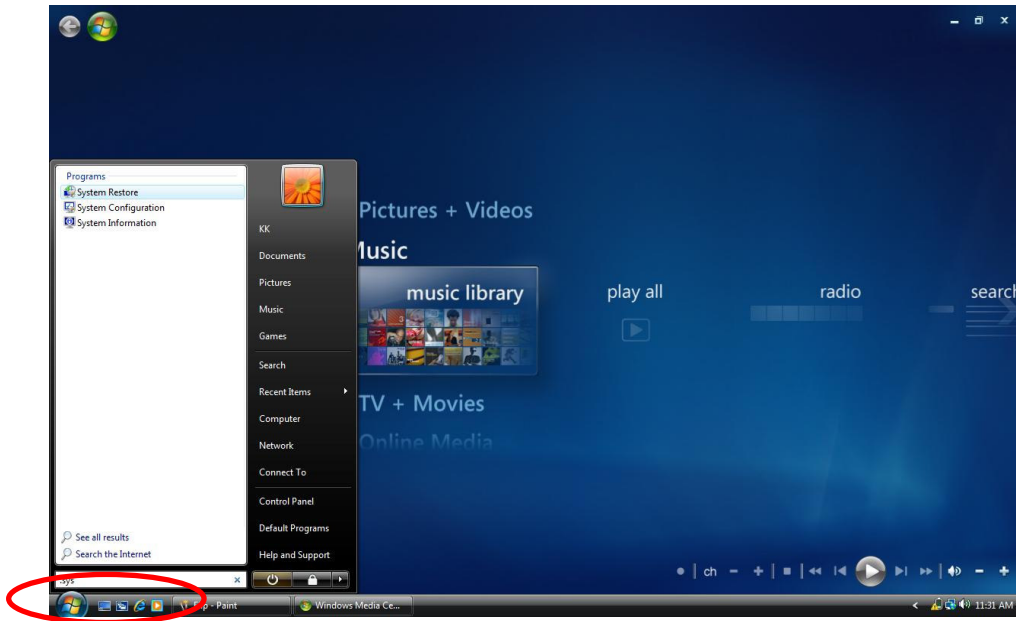
To recall all default multimedia applications, click on "All Programs" located on the left corner on the desktop, the "All Programs" will be changed to "Back" as shown in the following figure.



It now becomes more easy to execute various application with just click on it.

Instant Search

The Start menu features integrated desktop search through a new feature called Instant Search which can help you find and launch almost anything on your PC. Just type in a word, a name, or a phrase, and Instant Search can find the right file for you.

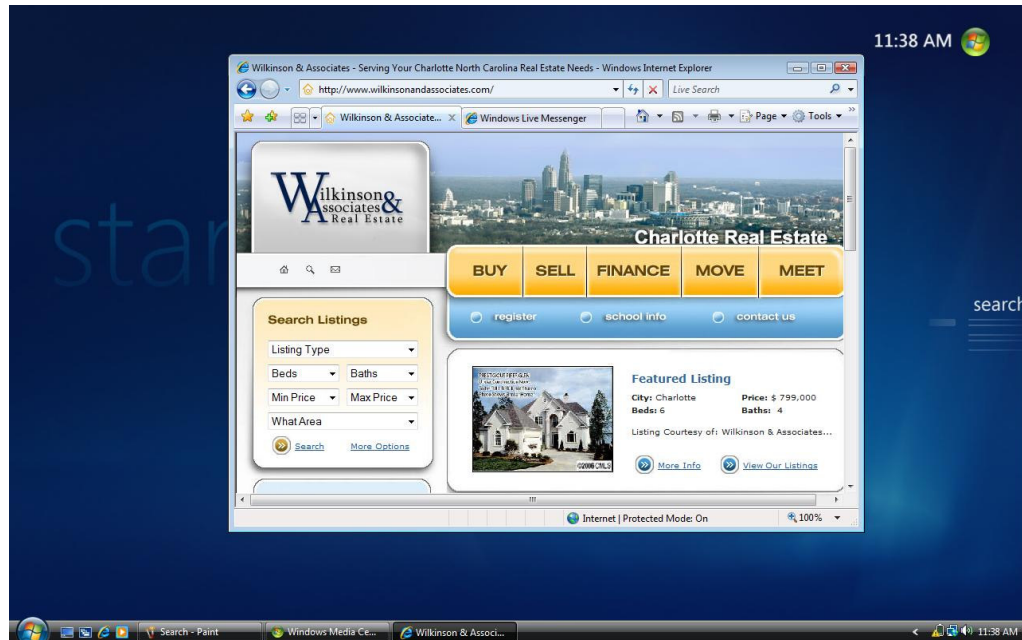


Use Instant Search to quickly find the information you need.

4.3 Enjoy Your Multimedia Application

Internet Explorer

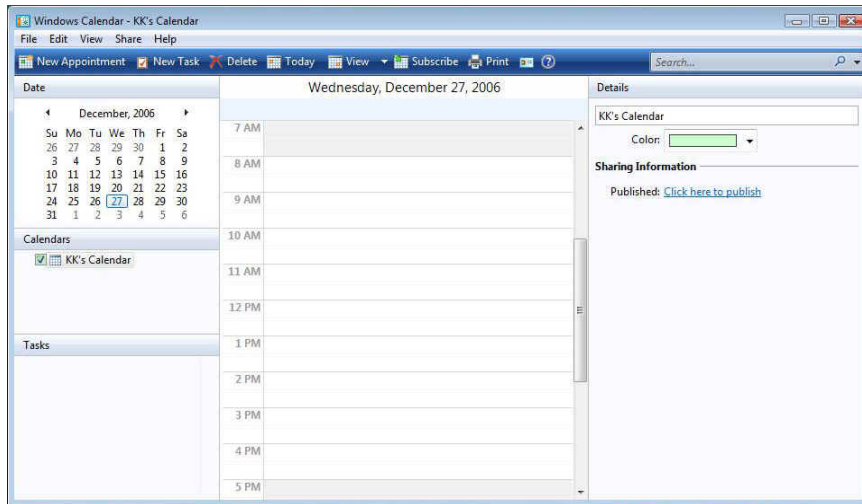
Windows Vista enhances the Internet Explorer experience in finding and displaying information, and Web sites on the Internet.



The upcoming release of Internet Explorer 7 not only adds important new security and privacy features, but makes everyday tasks easier through features such as tabbed browsing, inline search, and shrink-to-fit printing

Windows Calendar

Windows Calendar helps you in management appointments and tasks by creating personal calendar, publishing them, and subscribe to other users calendars.

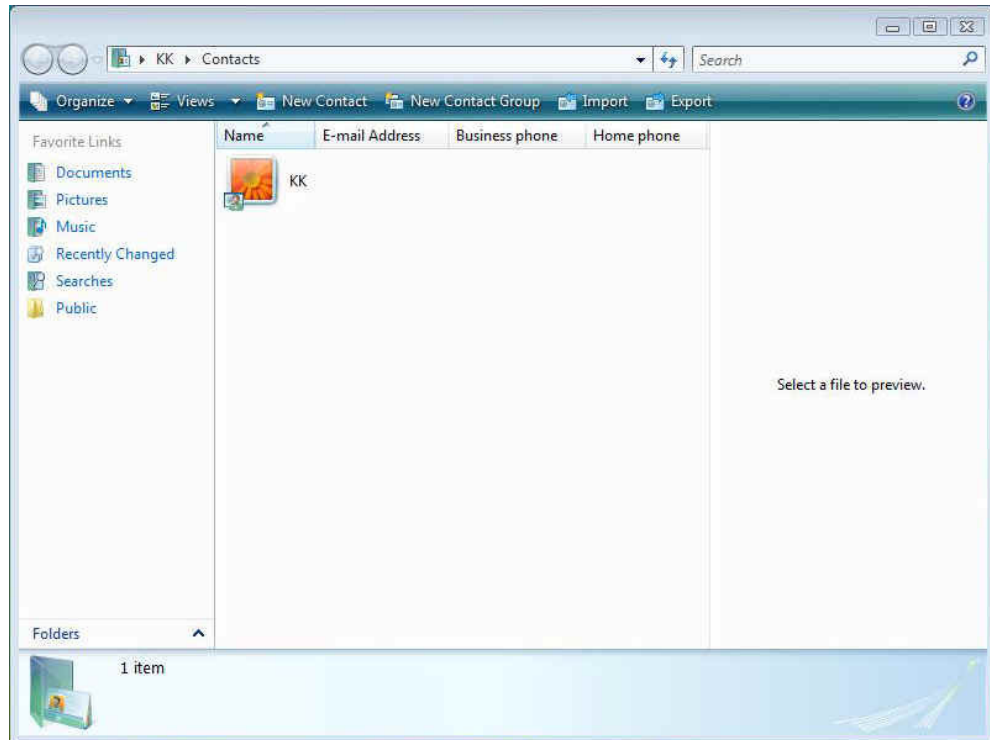


Windows Calendar is a flexible, easy-to-use calendar built directly into the Windows Vista operating system. It lets you plan and manage all of your activities and coordinate your schedule with others. It also lets you create a personal task list and receive automatic notifications and reminders about specific tasks and upcoming appointments.

Windows Calendar has a broad range of features to help you manage your personal schedule

Windows Contacts

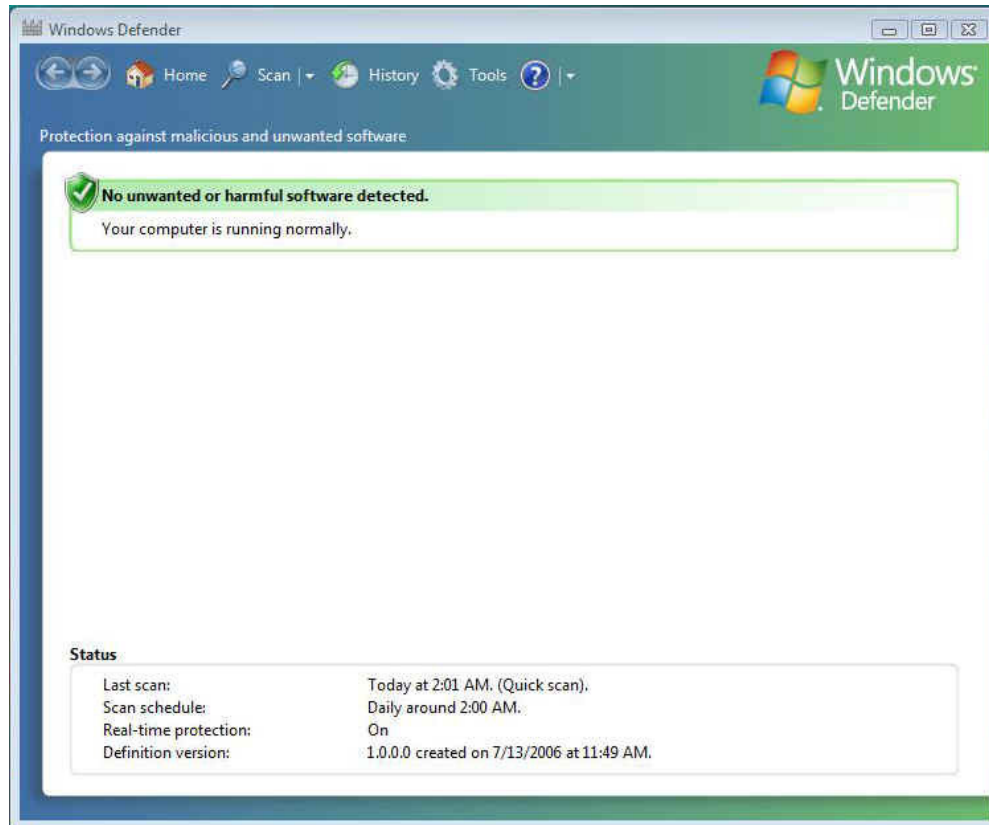
Windows Contacts can store e-mail addresses and other information about people and organizations.



Microsoft Windows Vista provides a new mechanism and user interface for storing and retrieving information about people (contacts) who are important to the users of Microsoft Outlook and Windows Mail (formerly Outlook Express).

Windows Defender

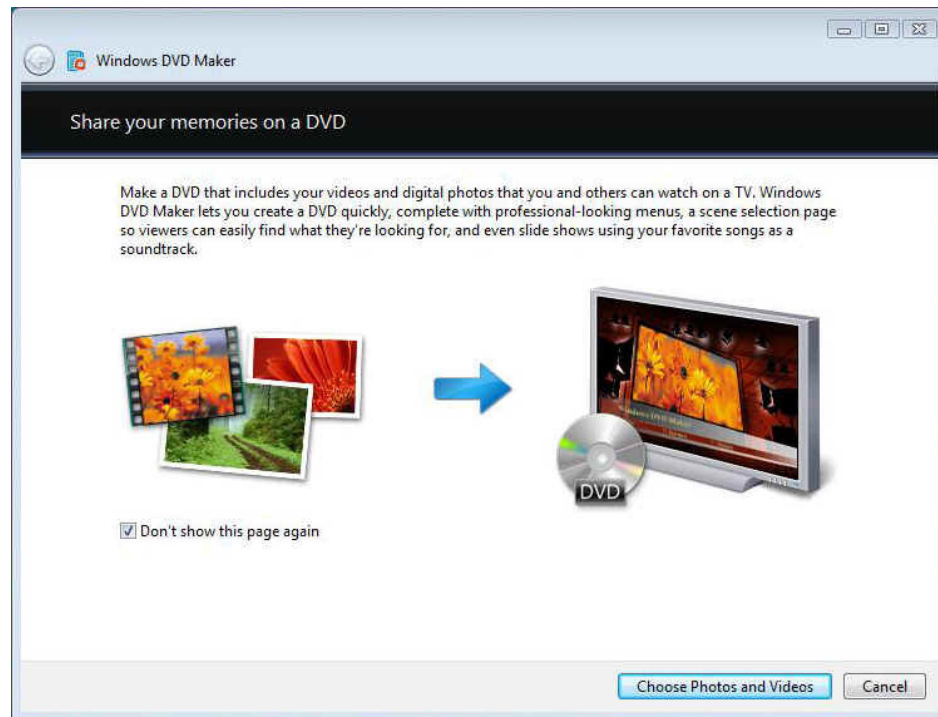
Windows Defender is able to protect the computer from spyware and other potentially unwanted software.



Windows Defender helps protect computers against pop-ups, slow performance, and security threats caused by spyware and other unwanted software. Applications can check and change its status.

Windows DVD Maker

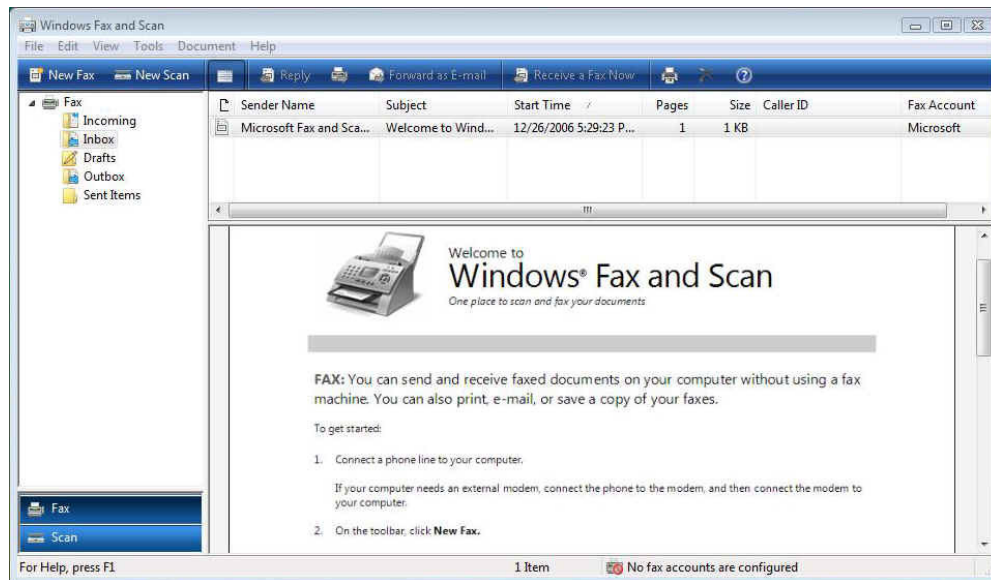
Windows DVD maker helps you burn pictures and video to DVD..



Windows DVD maker lets you create a DVD quickly, complete with professional-looking menus, a scene selection page so viewers can easily find what they are looking for, and even slide shows using your favorite songs as a soundtrack.

Windows Fax and Scan

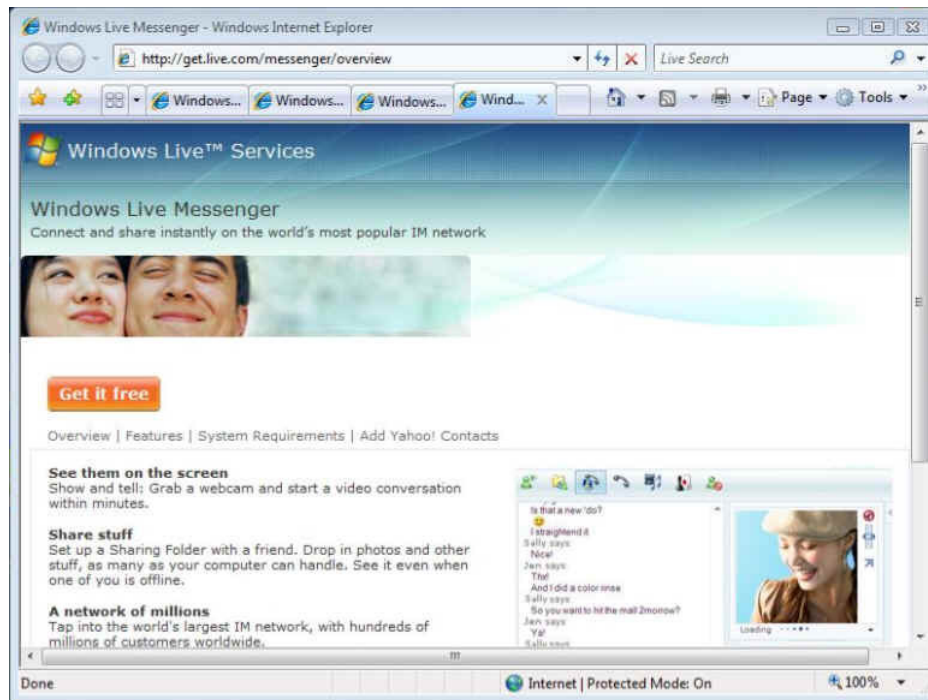
Windows Fax and Scan help you send and receive faxes or scan pictures and documents.



Faxing and scanning functions come together in Windows Vista through Windows Fax and Scan. Sending and receiving faxes through your PC is now as simple as performing the same tasks on a fax machine, especially for digital document

Windows Live Messenger Download

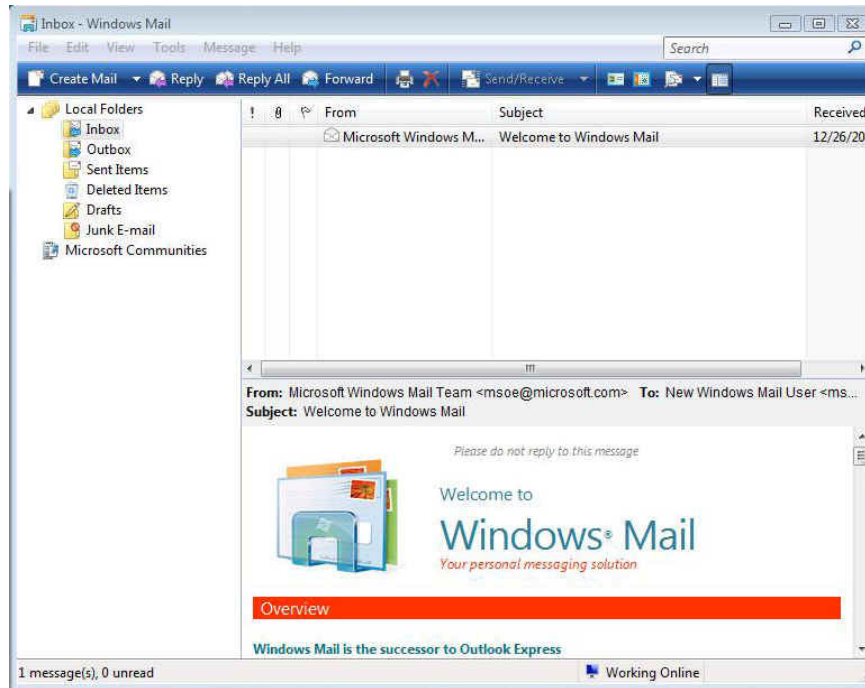
Windows Live Messenger Download can connect and share message instantly on the world's favorite IM service..



Windows Live Messenger is the next-generation MSN Messenger. It has everything you already love about Messenger, and much more.

Windows Mail

Windows Mail can send and receive e-mail and newsgroup messages.



Windows Mail is designed to help you prevent emerged some annoyances and risks that have grown over the years, that enables your e-mail experience is as productive and fun as possible. Windows Mail includes features that help you reduce the risks, while enjoying the many benefits, of e-mail

Windows Media Center

Windows Media Center lets you opens your home entertainment option for digital and on-demand media, including TV, Movies, music and pictures.

It is enable to make you enjoy all your favorite digital entertainment—including live and recorded TV, movies, music, and pictures—in one place with the easy-to-use Windows Media Center menu system and remote control. Windows Media Center in Windows Vista includes enhancements for expanded support of digital and high-definition cable TV, an improved menu system, and the ability to create a consumer-electronics-quality living-room experience, as well as new options for multi-room access to your entertainment through Media Center Extenders.

Windows Media Player

Windows Media Player can play digital media including music, video, CDs and DVDs.



Windows Media Player gives you an easier way to enjoy and manage your digital music, video, and pictures on your PC. See things the way you want to see them, by CD cover art or in lists. Connect to networked media devices around your home or seamlessly sync up with your portable digital media player to enjoy all your entertainment wherever you are. Sporting an improved look and feel, Windows Media Player delivers a high-quality audio and visual experience both on the computer and around your home

Windows Meeting Space

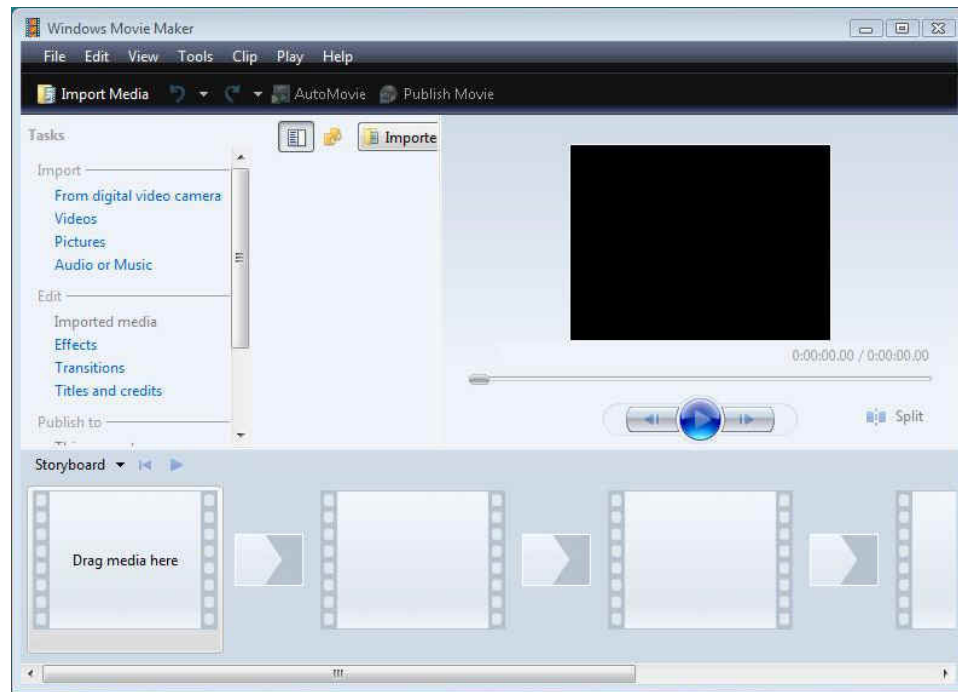
Windows Meeting Space lets you share files, a program, or your laptop anytime and anywhere.



Windows Meeting Space gives you the ability to share documents, programs, or your desktop with other people. Some advantages are: you can share your desktop or any program with other meeting participants; you and other meeting participants can distribute and co-edit documents; you can pass notes to other participants; you can connect to a network projector to give a presentation.

Windows Movie Maker

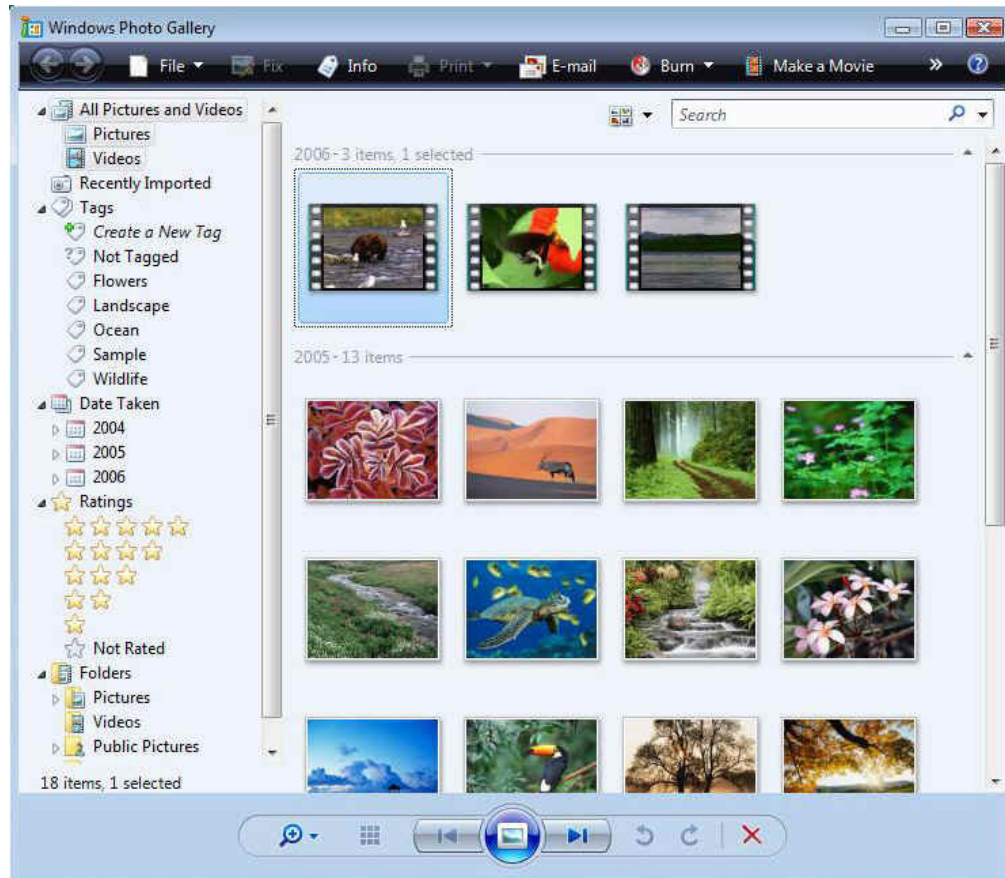
Windows Movie Maker helps you make your own movie using videos, digital pictures and movies.



With Windows Movie Maker, you can quickly and easily import, edit, and organize all of your digital home videos. New tools, such as new effects and transitions, and improved graphics performance help you manage and edit your home videos. You can include photos along with video when you create a movie, and even add narration and soundtracks. Once your movies are just the way you want them, you can easily burn them to DVD or share them with others through the Internet

Windows Photo Gallery

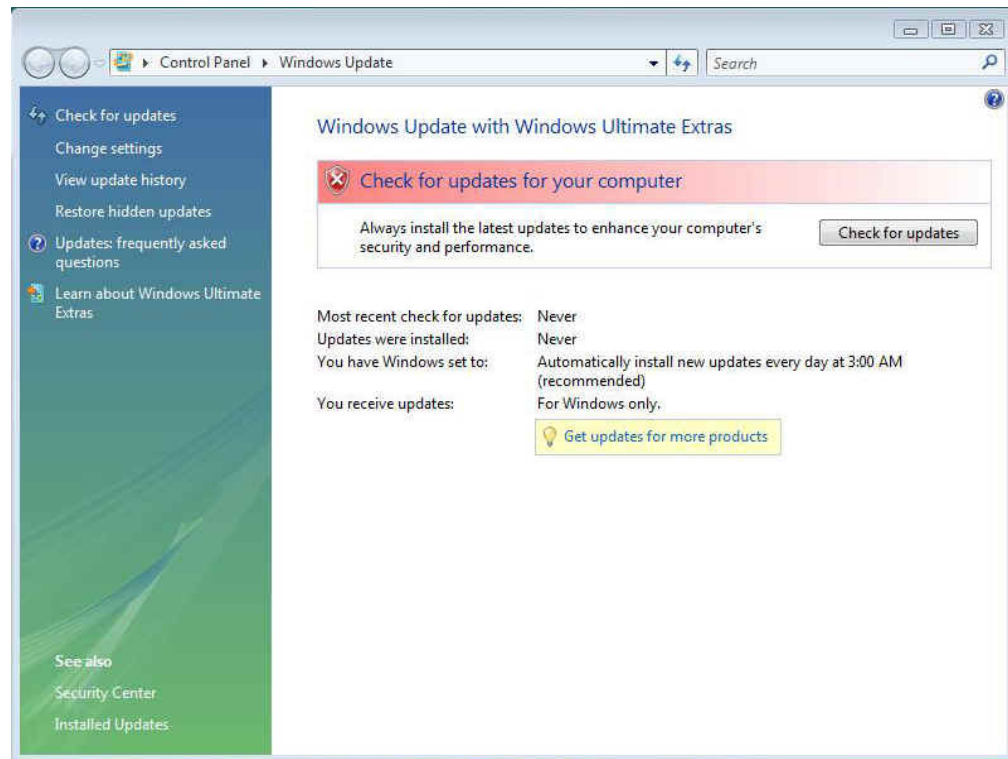
Windows Photo Gallery lets you view , edit, organize, and share your photos and videos.



Windows Photo Gallery in Windows Vista gives you the tools you need to easily organize, find, and view your photos and videos. You can edit, print, and share your photos from within Windows Photo Gallery, as well as transfer photos from your camera to your computer with a simple import process

Windows Update

Windows Update delivers software updates and drivers, and provide automatic updating options.



Windows Update keeps your computer up to date and more secure by automatically providing software updates to Microsoft Windows Vista. Updates can include upgrades to Windows Vista features, updates that improve reliability and performance, and updates that provide new security protections against malware and other potentially unwanted software.

Windows Update makes updating easy and minimizes disruption to your work. It's easy to start updating—when you set up Windows Vista, you can set options that enable Windows Update to automatically download and install updates for you—so you can "set it and forget it

Windows Sidebar and Gadgets

As you use your computer to access more information, perform more tasks, and interact with more software applications, you increasingly face information overload. You open a web browser just to check the weather, open an application to view your calendar, and open a

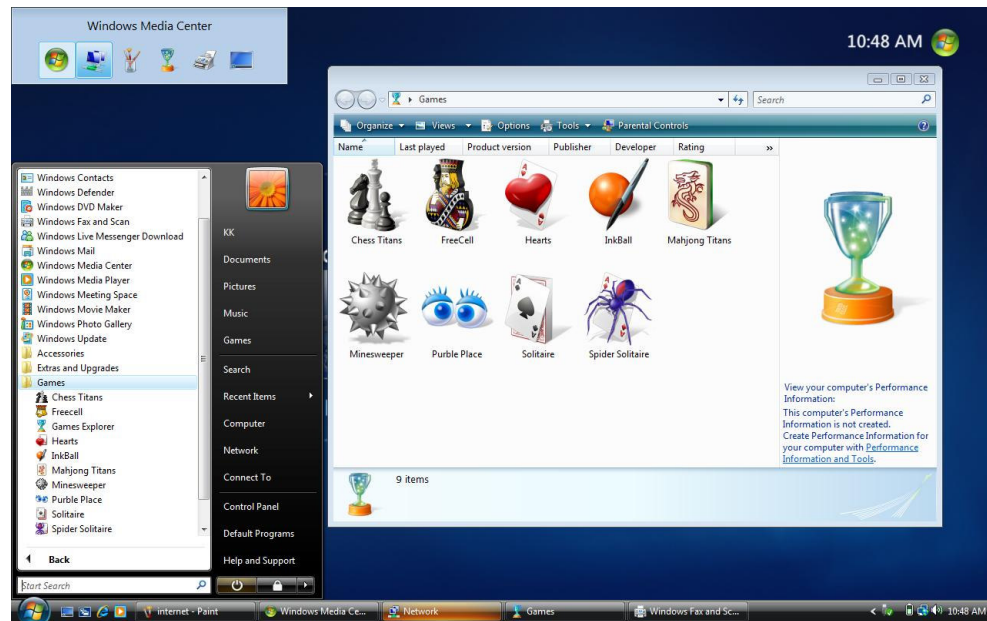
calculator program to simply add numbers. You need simple, specialized, and lightweight mini-applications that put information and tasks at your fingertips—no matter what you're doing.

Windows Sidebar boosts your personal productivity by providing instant access to gadgets—a wide variety of engaging, easy-to-use, and customizable mini-applications that offer information at a glance and provide easy access to frequently used tools



Gaming

If you are a parent, you now have a rich set of controls to ensure your children are only playing games that you consider appropriate. You can allow or restrict your children's access to games according to game title, rating, category, or content. Windows Vista supports six international rating standards and makes it easy for parents to manage and monitor their children's gaming experience



Windows Flip and Windows Flip 3D

Windows Vista provides two entirely new features to manage windows: Windows Flip and Windows Flip 3D. Flip allows you to flip through open windows (by using Alt+Tab), providing a live thumbnail of each window, rather than just a generic icon and file name. Live thumbnails make it easier to quickly identify the window you want, particularly when multiple windows of the same kind are open. With Flip 3D, you can use the scroll wheel on your mouse to flip through open windows in a stack, and quickly locate and select the one you want to work with.



Use Flip to view and navigate more easily through open windows.

You can visit and browse each domain to experience the information and assistance that Windows Vista offers.

For more information, please refer to Microsoft's website:
<http://www.microsoft.com/windowsvista/features/default.mspx>

5 Connecting to Peripherals

This chapter describes how you attach peripheral devices to your mini EPC. You can attach a printer or mouse; connect an external monitor and keyboard, or any other peripheral device.

5.1 Using the USB Port

USB (Universal Serial Bus) is a hardware interface that enables you to connect multiple devices (such as mouse, keyboard, storage device, joystick, digital camera, and video conference cameras, etc.) to your mini EPC. Besides, USB's hot swap capability allows everything to be plugged in and unplugged without turning the system off.

Microsoft, HP, Compaq, Intel, Agere, NEC and Philip are seven core members of USB-IF to have worked on USB 2.0 standardization. USB 2.0 offers data transfer rate up to 480Mbps (megabits per second) compared to USB 1.1 devices, which transfer at speeds of 12Mbps. So, you could know that USB 2.0 can transfer data between the mini EPC and its peripherals 40 times faster than USB 1.1. However, USB 2.0 is fully backward compatible, you will be able to use a USB 1.1 device in a USB 2.0 compliant system.

5.2 Using the LAN Port

This mini EPC is equipped with an internal 10B /100/1000Base-T Gigabit Ethernet LAN module that connects your mini EPC to other mini EPC/networks through a local area network (LAN) and supports data transfer rates at 10/100Mbps and can be up to 1000Mbps. The 100Base-TX is called Fast Ethernet.

To meet higher bandwidth demand, this mini EPC has upgraded Fast Ethernet to Gigabit Ethernet. The network becomes more efficient while downloading movies, music or other multimedia files.

The built-in Gigabit Ethernet LAN module provides a standard RJ-45 connector.

5.3 Using the IEEE 1394 Port

IEEE 1394, also known as FireWire, is a high-bandwidth serial bus developed by Apple and Texas Instruments. IEEE 1394 supports 100, 200, and 400 Mbps (Megabit per second) transfer rates and is widely used for downing video from digital camcorders to the mini EPC. In addition to its high speed, IEEE 1394 enables isochronous (real-time) data transfer. This makes it ideal for devices that transfer high-bandwidth of data in real-time, such as video devices. It supports both Plug-and-Play and hot plugging, and also allows for the connection of up to 63 devices.

With built-in IEEE 1394 port, this mini EPC enables the peripheral devices in transmitting digital video data or data backup. The Windows system will automatically recognize it after installing a suitable driver for it. Please visit Microsoft's web site for more

information about it. Moreover, you should install the driver of peripheral device to connect with the IEEE 1394 port, for details please refer to the manual that comes with your peripheral device.

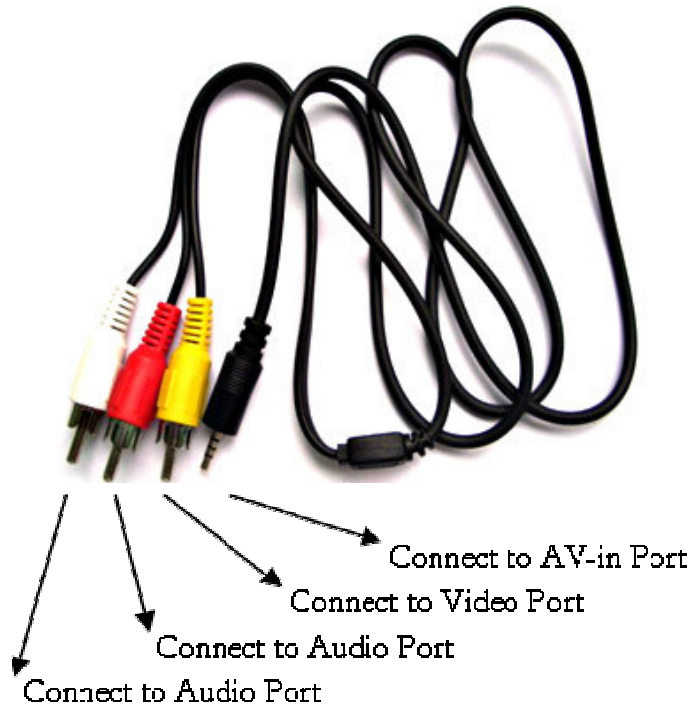
5.4 Using the AV-in Port (optional)

AV-IN is the function that TV tuner offers, like the function of Video Recorder that allows audio-visual signals to be received by your Mini EPC. No matter TV programs and other media sources such as DVD player, DSC/DV, Hi8, D8 or video recorder, you can record or play whatever you want.

You can transmit the video and audio signals via AV in port into TV tuners as video capture cards to record the programs or film onto a hard disk, with installing its collocate software, you are allowed for audio-visual editing.

To use the AV-in port, you should install the third party application like Cyberlink PowerCinema 5 first, then connect the DVD player, DV consume electronic device, etc....with AV_in cable into GE3 AV_in port.

AV-in Cable




When an AV connection cable is used for connection through the AV-in port, the mini EPC automatically detects the video signal of the connected device. You can view the video on the screen simply by starting playback on the connected device.

Mini EPC gives you the most intact video recording and editing function for you when watch other types of your peripheral device to connect your mini EPC via the AV-in port.

For detailed, please refer to the instruction manual for your video equipment and the instructions supplied with the AV connection cable on how to connect your device to the mini EPC.

 *The TV-Tuner only can function with Intel® Core 2™ Duo.*

 *The AV-in function is optional, it only is available with installing the third party application.*

5.5 Using the Wireless LAN

Access Point (AP) is the wireless transmission and receiving device, it generally connects to the server of a LAN environment or act as a LAN hub with wireless connection. Access point can be set in an office environment, airport, major railway station, etc. that depends on the construction of each country. In most case, you probably can use it at office, please consult with the network department of your company for more details.

This mini EPC integrates built-in Tri-mode 802.11 a/b/g wireless LAN module with using Intel® PRO/Wireless network solution by Intel® Centrino™ mobile technology. IEEE 802.11b standard supports 11 Mbps wireless connection speed. However, IEEE 802.11g supports 54Mbps wireless connection speed, and is backward compatible with the slower 802.11b. Using the orthogonal FDM (OFDM) transmission method, IEEE 802.11a operates in the 5 GHz frequency range and provides up to 54 Mbps connection speed. The higher operating frequency means a shorter transmission radius (about 60 feet). Yet, 802.11a offers more radio channels than 802.11b does. That can help avoid radio and microwave interference.

Wireless LAN module is similar to LAN module. You need to install software driver before using it. Please refer to chapter 2.5 on how to install the driver.

5.6 Using the Modem Port

This mini EPC comes equipped with a 56Kbps v.92 Data/Fax MDC 1.5 (Azalia) Modem that allows you to communicate with others via fax, email, or to connect to an online service or bulletin board. The built-in fax/data modem provides standard phone connector (RJ-11 connector).

NOTE: For electrical safety concerns, only use telephone cables rated 26AWG or higher.

When using your telephone equipment, basic safety precautions should always be followed to reduce the risk of fire, electric shock and injury to persons, including the following:

1. Do not use this product near water, for example, near a bath tub, wash bowl, kitchen sink or laundry tub, in a wet basement or near a swimming pool.
2. Avoid using a telephone (other than a cordless type) during an electrical storm. There may be a remote risk of electric shock from lightning.
3. Do not use the telephone to report a gas leak in the vicinity of the leak.
4. Use only the power cord and batteries indicated in this manual. Do not dispose of batteries in a fire. They may explode. Check with local codes for possible special disposal instructions.

6 BIOS Setup

Your mini EPC also uses the Phoenix BIOS Setup program that allows you to set several system configurations in changing the way your mini EPC performs. This includes your system time and date, disk drive configuration and password setup. This information is then stored in the CMOS RAM and will remain permanent unless you change it again.

6.1 Running the BIOS Setup Program

Your mini EPC is likely to have been properly setup and configured by your dealer prior to delivery. However, you may find it necessary to use the mini EPC's BIOS (Basic Input-Output System) Setup program to change system configuration information, such as your hard disk drive type. The Setup program can be accessed when you power on the system and pressing the <F2> function key.

As the POST (Power-On Self Test) executes during the boot up process, the screen will display the following message:

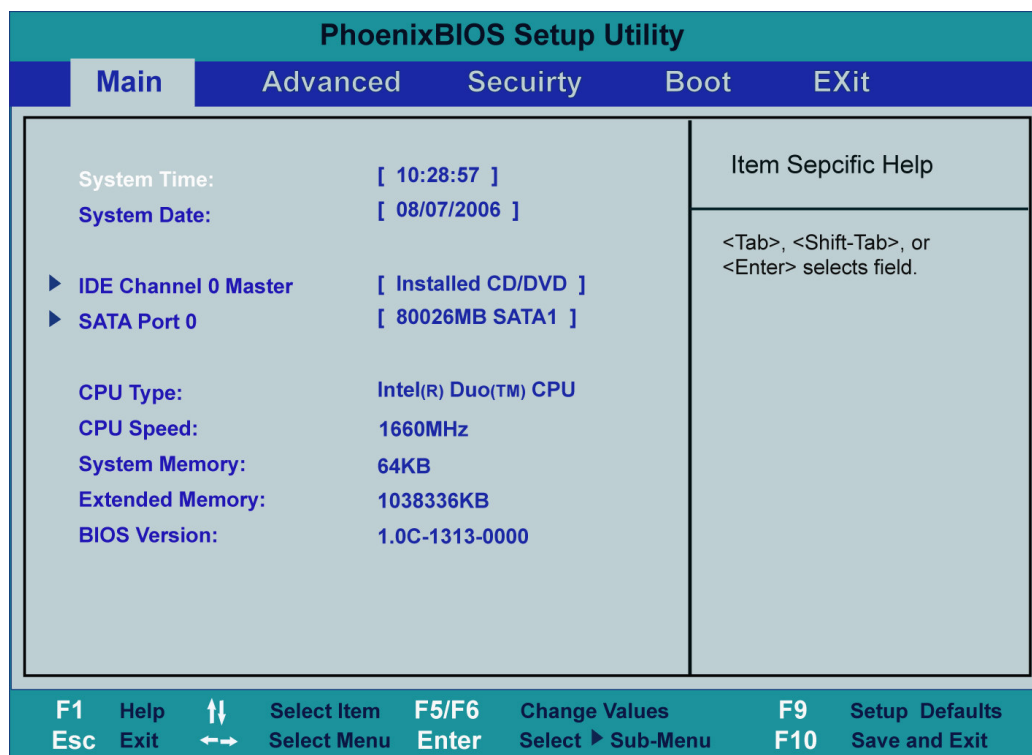
Press <F2> to Enter SETUP

Press the <F2> key to run the BIOS Setup program. The BIOS Setup program is organized into five menus which you can select using the ← and → keys. To move from one option to another, you use the <+> and <-> keys to change the settings. On the right hand side of the

screen are some brief help descriptions of each item you want to change.

To exit the BIOS Setup program, simply press the <Esc> key and select from the Exit menu whether you want to save changes and exit; discard changes and exit.

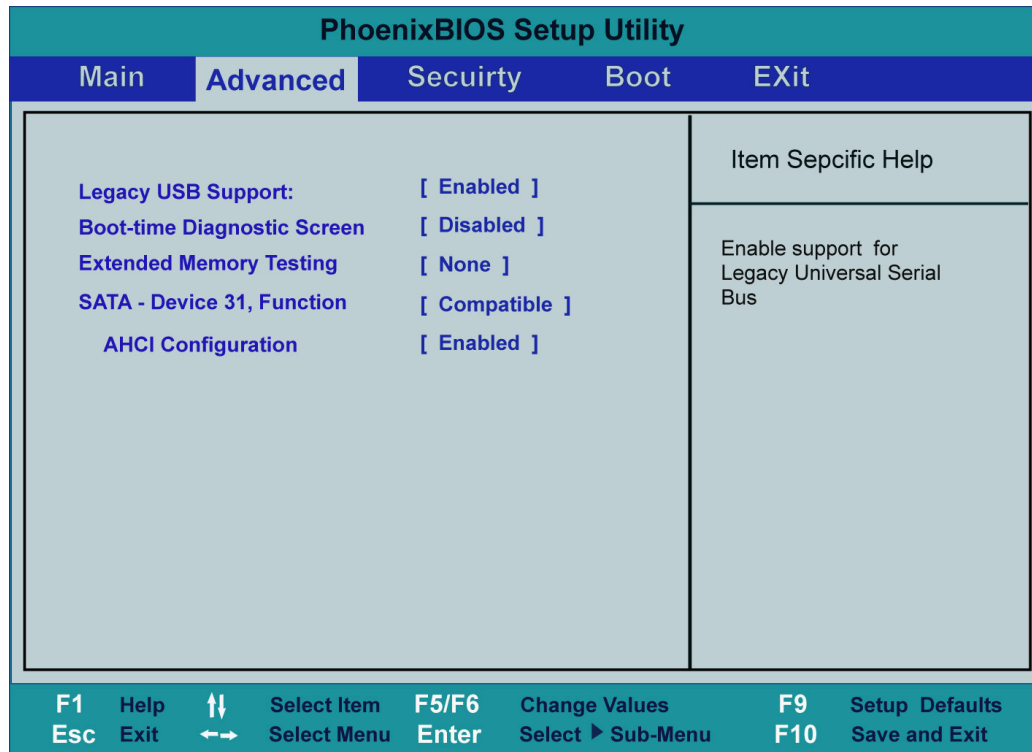
6.2 Using the Main Menu Setup



- System Time
Allows you to change the system time using the hour: minute: second format of the mini EPC.
You can also change the system time from your operating system.

- **System Date**
Allows you to set the system date using the month/date/year format.
You can also change the system time from your operating system.
- **IDE Channel 0 Master**
This field displays various parameters for the hard disk drive. If type [Auto] is selected, the system automatically sets these parameters. If type [User] is selected, Cylinders, Heads and Sectors and other value can be edited.
- **SATA Port 0**
This field is for information only as the BIOS automatically detects the optical drive.
- **CPU Type**
This field reports the CPU type information detected by the BIOS during Power-On Self-Test (POST).
- **CPU Speed**
This field reports the CPU speed information detected by the BIOS during Power-On Self-Test (POST).
- **System Memory**
This field reports the amount of base (or conventional) memory found by the BIOS during Power-On Self-Test (POST).
- **Extended Memory**
This field reports the amount of extended memory found by the BIOS during Power-On Self-Test (POST).
- **BIOS Version**
This field is for information only as the BIOS displays the BIOS version during the Power-On Self-Test (POST).

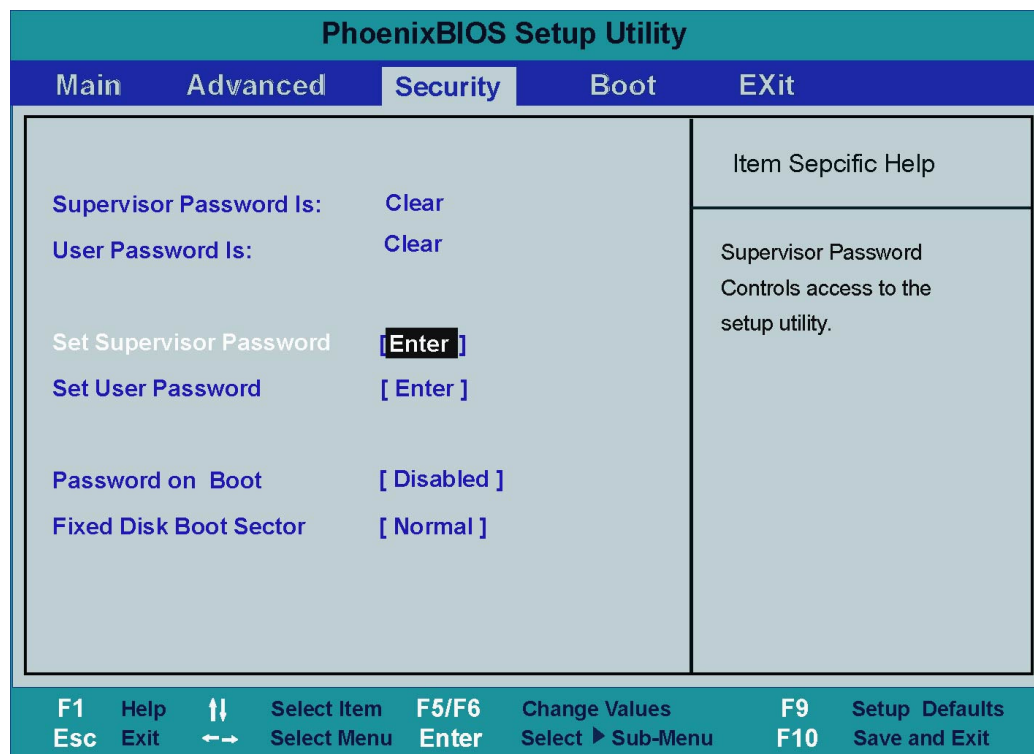
6.3 Using the Advanced CMOS Setup



- **Legacy USB Support**
Enable or disable the USB Bus support when in connection with USB device.
- **Boot-time Diagnostic Screen**
Lets you display or not display the diagnostic screen by choosing Disabled or Enabled.
- **Extended Memory Testing**
Determines which type of tests will be performed on extended memory (above 1M).

- SATA – Device 31, Function
This function lets you choose “Compatible” or “Enhanced” to define the SATA or PATA controller mode. For enabling the AHCI configuration, you should choose “Enhanced” option first.
- AHCI Configuration
Lets you choose “Enabled” or “Disabled” to activate or inactive the AHCI mode for Windows Vista driver.

6.4 Security Menu Setup

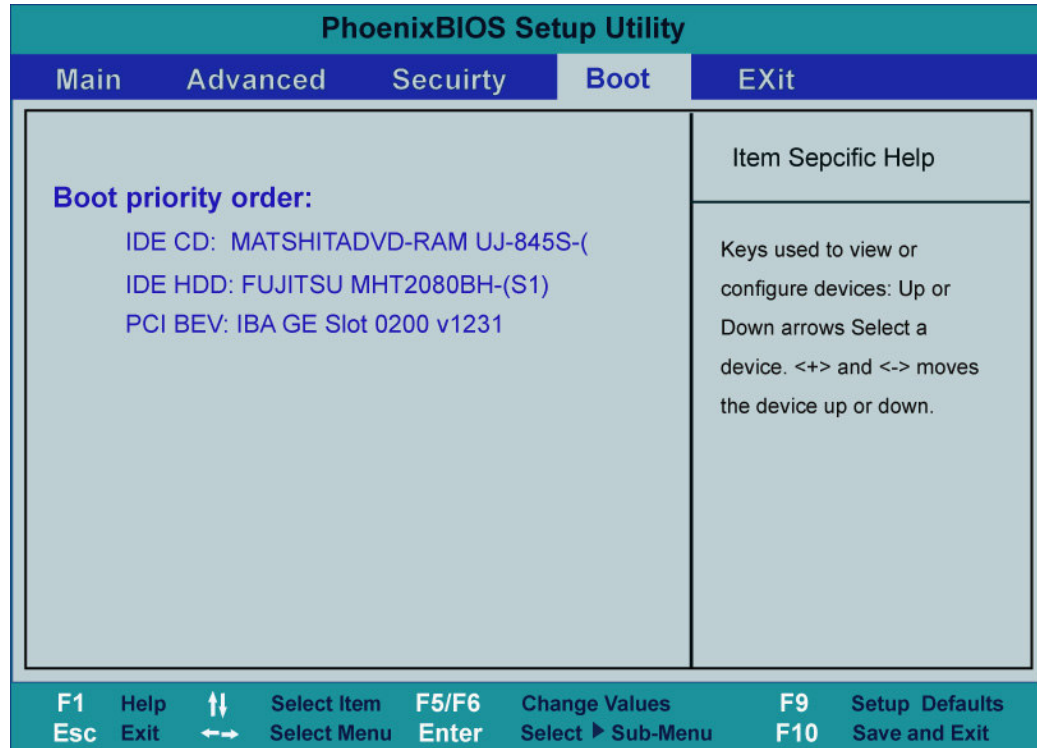


- Supervisor Password Is
Set/Clear selections show that the mini EPC is under controlled by Supervisor Password or not.

- **User Password Is**
Set/Clear selections show that the mini EPC is under controlled by User Password or not.
- **Set Supervisor Password**
Supervisor password gives you the authority in accessing the setup utility. You also need to enter this password in system booting and resuming from suspend mode. When you press **<Enter>** in this field, the Set Supervisor Password dialog box appears. Enter a new password with up to 8 alpha-numeric characters, and then re-enter it for confirmation.
- **Set User Password**
This field is only available when Supervisor Password has set. Enter the user password when boot the system or resume from suspend mode. But if the Write Protect is set in the Fixed disk boot sector field, you should enter a supervisor password to access the fixed disk when boot the system or resume from suspend mode.
- **Password on Boot**
If you set this field to Enabled, your mini EPC will always ask for the password every time you boot your mini EPC.
- **Fixed Disk Boot Sector**
If you set this field to Write Protect, the write protect boot sector on hard disk will protect against viruses. In this situation, only the supervisor can access the Boot Sector of fixed disk.

6.5 Using the Boot Setup

This item allows you to set the search drive sequence where the system will try to boot up first.

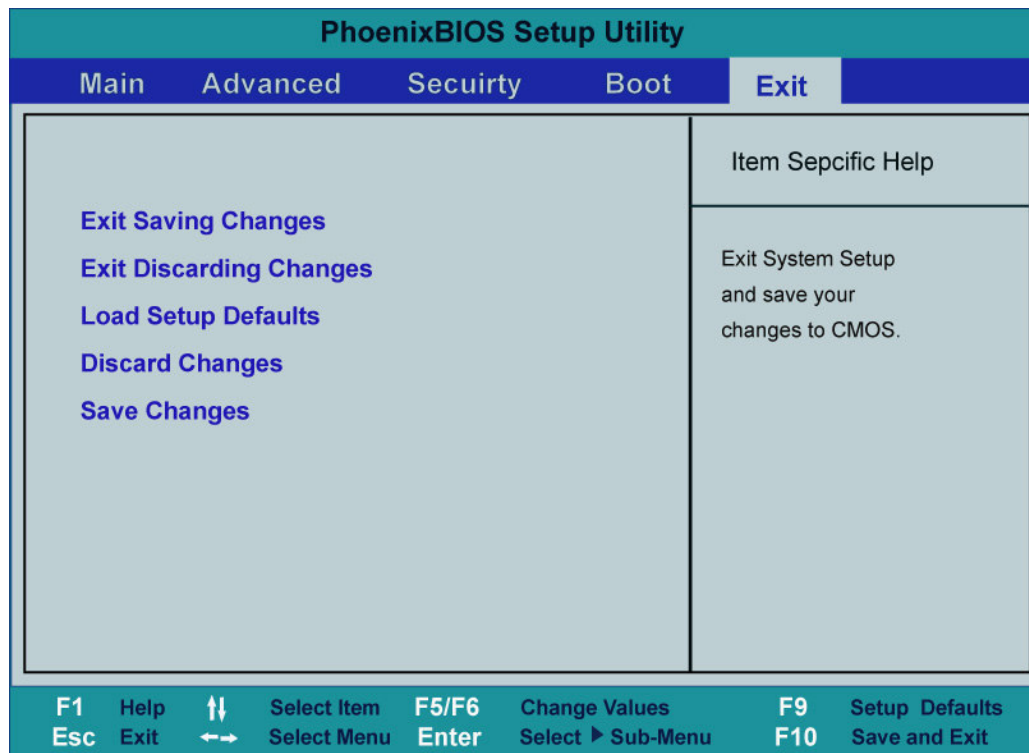


This page allows you to set the search drive sequence where the system will try to boot up first.

To select the boot device, you can use the up or down arrow key, then press <+> to move up the device in the list or press <-> to move down the device in the list. To exit from this menu, press <Esc>.

6.6 How to Exit the Setup Program

There are two choices to escape from the Setup program.



- **Exit Saving Changes**
Saves all changes to CMOS while running the BIOS setup program and exit from the system setup program.
- **Exit Discarding Changes**
Allows you to discard all changes made while running the BIOS setup program and exit from the system setup program.
- **Load Setup Defaults**
Lets you load the default values for all setup items.
- **Discard Changes**
Reverts to previously selected settings.
- **Save Changes**
Saves Setup data to CMOS.

7 Caring for Your mini EPC

Important Safety Instructions

This section gives you detailed information about how to maintain a safe environment while using the mini EPC. You can maintain its condition and performance by following these guidelines. Please read it carefully to ensure maximum safety.

- Lay the mini EPC on a reliable surface when installing. A drop or fall may cause injury.
- The Air-Outlet Vents on both sides of this mini EPC are for air convection hence the mini EPC can be protected from overheating. **DO NOT COVER THE AIR-OUTLET VENTS.**
- Never open the body of mini EPC. For safety reason, the mini EPC should only be opened by qualified service personnel.

Environment

- Please keep the mini EPC from humidity.
- Use only a power adapter approved for use with this mini EPC.

- Though your AC adapter is suitable for universal international voltage, it still requires a stable and continual power supply. Make sure the voltage of the power source is suitable when connect the mini EPC to the power outlet. If you are unsure of your local power specifications, consult your dealer or local power company.
- Do not leave this mini EPC in an environment unconditioned. Storage temperature above 60°C (140°F) may damage the mini EPC.

Power Supply

- All cautions and warnings on the mini EPC should be noted.
- The power adapter may have a 3-prong plug. This is an important safety feature. A compatible outlet is required. If it is not available, find a qualified electrician to install one.
- While unplugging the power cord, disconnect it by the plug head, not by its wire.
- Make sure the socket and any extension cords you may use can support the total current load of all the connected devices.
- If the mini EPC is not in use for a long time, disconnect it from power supply to avoid possible damage by transient over-voltage.
- To avoid any damage happened to the internal device, you should first disconnect the AC adapter when replacing any internal device.

Cleaning Your Mini EPC

When it is necessary to clean the plastic case, use a soft, lint-free cloth, slightly dampened with a mild detergent solution. When cleaning, do not use liquid or sprayed detergent for cleaning. Instead, use moisture sheet or a cloth for cleaning.

Never use alcohol, petroleum-based solvents, or harsh detergents to clean the mini EPC. Also never spray any liquids directly on the mini EPC case, keyboard, or screen.

Maintaining Hard Disk

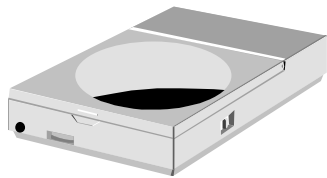
Here is some maintenance you could do:

- Install the antivirus program to **monitor virus** that could hacker your files.
- Use SCANDISK once in a while to correct any errors found in the directory and File Allocation Table. This will also free up space from any unused sectors.
- Use hard disk maintenance programs like **Disk Defragmenter** of Windows. These reorganize your hard disk by eliminating fragmentation and improving your hard disk access time.
- Install a system password in your mini EPC so others won't be able to use the hard disk.

This page is intended to be blank.

APPENDIX A

System Specifications



This appendix gives information on the technical and hardware specifications of your mini EPC. Please note that the information mentioned here may not be exactly the same with your mini EPC as specification is subject to change without notice or modifying this manual.

Designed with an advanced modular architecture, your mini EPC also allows you for several levels of customization and expansion that are previously available only on desktop PCs.

System Specifications

PROCESSOR UNIT

- Intel® Core™ 2 Duo or Celeron® processor (Santa Rosa)
- 4MB or 2MB integrated L2 cache

SYSTEM MEMORY

- Two 200-pin memory slots
- User-upgradeable to maximum 4GB using 200-pin SODIMM 512MB, 1024MB or 2048MB modules
- DDR2–667 SDRAM modules

STORAGE

- 2.5” Format 9.5mm High SATA HDD Module; Bus Mastering, Ultra DMA ATA-150 Support for LBA Scheme
- Fixed Slot-in DVD-Multi /Combo

VIDEO

- Embedded in Intel GM965 sharing with main memory
- 85 Hz Refresh Rate: Max. 1600 x 1200 pixels, up to 32bit Colors

WIRELESS USB KEYBOARD

- 99 Keys (including hot-key) with Track Ball (mouse) function
- Distance for remote control: within 5m
- Frequency for signal transmitted: at 2.4GHz

AUDIO

- Sound Codec chip: Azalia ALC268
- Compliant with Intel HD Audio

I/O PORTS

- One DVI-I Socket
- One AV-In Port
- One TV Port (S-Video)
- Three USB2.0 Ports at rear side
- One USB2.0 Port at front side
- 4 in 1 Card Reader (for SD, MS, MMC & MS Pro) Socket
- One DC-in Jack
- One IEEE 1394 Port
- TV-Tuner Port (Option)

 ***The TV-Tuner only function with Intel® Core 2™ Duo.***

- External CIR Remote Control
- One Headphone/Line Out Jack shared with SPDIF out
- One Microphone/Line in Jack

COMMUNICATION

- Built-in 10/100/1000Base-T Ethernet Giga-LAN
- 56Kbps v.92 Data/Fax MDC 1.5 (Azalia) Modem Module (Option)

WIRELESS

- USB Interface
- External Bluetooth Headphone, Keyboard & Mouse

- Offers a wireless connection radius of 32.8 feet (10 meters) to other Bluetooth devices.
- WLAN card with third party is available

Power System

- Adapter, AC 100-240Volt, 50-60 Hz, 65W, 20 Voltage or Less

OPERATING SYSTEM

- Windows Vista

WEIGHT AND DIMENSION

- 226mm (W) x 172mm (D) x 42mm (H)
- Approximately 1.3kg